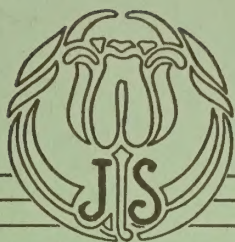


62

Bu



BEAUTY *from* BULBS

LIBRARY
RECEIVED
★ MAR 13 1957 ★
U. S. Department of Agriculture

SPRING
1957

JOHN SCHEEPERS, INC.
Flower Bulb Specialists
37 WALL STREET
NEW YORK 5, NEW YORK

The Tranquillity of the Garden

RELAXING - - - BEAUTEOUS - - - REWARDING

Whoever makes a garden not only adds a breath of beauty to the world but does something for himself that he probably never dreamed he could do. Almost it is like waving a magic wand—and presto! he is a changed being. What ever may have actuated the making of the garden in the first place—a desire for orderliness, perhaps, an instinct for display, or merely to do as his friends have done—the result is nearly always unexpected. The maker, or in the beginning he is probably only the instigator, may expect to get nothing more from his garden than a negative satisfaction, yet almost invariably he finds himself in the grip of a new and absorbing interest. And with renewed and resensitized senses; with eyes that see for the first time clearly the pale young enchantment of the spring overcoming winter's desolation; the rich fulfillment of summer, autumn's wistful beauty; with ears that hear as they have not heard perhaps since his boyhood, the songs of birds; with a nose alert for delicious perfumes. And with what is worth all of these and more—with a heart unaccountably at peace. In short he has opened a window through which he may gaze upon the world from a wholly new vantage point.

To what other of our investments may we look for such richly gratuitous returns? Gardening more than any other activity or interest takes us out of ourselves, relieves us of petty anxieties, renders us unconscious of the innumerable trifling annoyances that mar the days; lifts us bodily out of life's ordinary routine and brings us instant recreation. Disquietude could find no more certain antidote than work in a garden, than the thousand and one interests to which it introduces us and the grateful bodily fatigue which it brings.

"There be delights," says an ancient writer, "that will fetch the day around from sun to sun, and rock the tedious year as in a delightful dream." This in quaint language and in a very few words tells of the interest and pleasures of a garden and of the instincts that are satisfied in its making.

Contents

	PAGE		PAGE
ACIDANTHERA MURIELAE	16	HEMEROCALLIS	21
Fragrant Abyssinian Sword Flower		Fragrant Day Lilies	
AGAPANTHUS UMBELLATUS	16	HIBISCUS	17
BEGONIAS	14	IRIS Kaempferi type	23
Named Varieties	15	Late June-July flowering	
BULB FOOD	31	ISMENE CALATHINA	18
CALLA LILIES	16	Peruvian Daffodils—Fragrant	
DAHLIAS Large Flowered	26	LILIES	34
Miniature	32	LILY COLLECTIONS	40
Pompon	33	LUPINUS	18
Single	31	Hardy Type	
DELPHINIUM	23	LYCORIS SQUAMIGERA	18
EUCOMIS BICOLOR	17	Amaryllis Halli	
Pineapple Flower		MISCELLANEOUS BULBS PLANTS	
FERNS	25	ROOTS	16
FUNKIA	16	MONTBRETIAS	20
Plantain Lily		OXALIS	18
GALTONIA CANDICANS	17	SPREKELIA FORMOSISSIMA	19
Snow White summer flowering Hyacinth		Mexican Fire Lily	
GLADIOLI	3	TIGRIDIA PAVONIA HYBRIDS	19
"All-America" Gladioli	10	Mexican Shell flowers	
Special Collections	8	TRITOMA	19
Miniature Types	9	Red Hot Poker or Torch Lilies	
New Varieties	10	TUBEROSES	19
Mixtures	13	Fragrance for the entire garden	
Thrip Control	13	WILD FLOWERS	24
GLORIOSA	17		
The climbing Lily of South Africa			

"The garden mystically . . . a place of spiritual repose, stillness, peace, refreshment, delight."

—JOHN HENRY NEWMAN

Beauty from Bulbs

SPRING 1957

SUPERIOR VARIETIES OF FLOWERING BULBS
OF PROVEN MERIT — HIGHEST QUALITY

*For Spring Planting
Summer and Fall Flowering*

*"God made the Flowers to beautify
The earth, and cheer man's careful mood:
And he is happiest who hath power
To gather wisdom from a flower,
And wake his heart in every hour
To pleasant gratitude."*

—WORDSWORTH

Other 1957 Editions of "Beauty from Bulbs" that will be mailed to you this year.

FORCING EDITION —

Bulbs and Roots for Greenhouse, Conservatory and window growing. Also items for outdoor growing in Florida and other frost proof sections.

FALL EDITION —

Our Superior Quality Holland Bulbs. Tulips, Narcissi, Hyacinths, Crocuses and other Bulbs and Roots for fall planting.



GOLD MEDAL
Awarded us by the
Garden Club
of America.

*Special Booklets
and Circulars*

HARDY CHRYSANTHEMUMS and ORIENTAL POPPIES

Chrysanthemums in finest kinds to include Decorative, Spoon and Cushion types. Oriental Poppies in finest varieties.

FALL FLOWERING BULBS —

Holland Crocus, the lovely Colchicums and Sternbergias planted in August and September and Flowering in a few weeks. Tall Bearded Iris will also be included in this circular.

NEW LILIES AND PEONIES —

Finest of the American and European varieties.

JOHN SCHEEPERS, Inc.
Flower Bulb Specialists

37 Wall Street
NEW YORK 5, N. Y.

Cable Address:
Tulips,
New York

"Serving America's Finest Gardens For Over 40 Years"

Telephone:
HAnover
2-1177

The Gladiolus

Gladiolus: "Diminutive of Latin *gladius*, a sword, from the shape of the leaves of the first described species."

Varieties selected by our experts and verified as such by the Leading Gladiolus Societies both here and abroad. Finest Quality Stock that has been selected by carefully trained employees — then especially treated in storage during the winter months to assure you the finest disease and insect free bulbs. Treated with D D T powder as we are packing your order. It is our aim and to our interest that you received the finest quality that will produce exhibition blooms in your garden.

FOR THE GARDEN AND FOR INDOOR DECORATION

Few flowers have so richly profited from the skill and taste of the hybridists' continued ambitions as the Gladioli. Through variation, selection and breeding, the comparatively inconspicuous flowers brought from Cape Colony some hundred and fifty years ago, have been re-furbished, elaborated, glorified, until memory of their simple early state is quite lost in the wonder of newly acquired colors, markings, bewitching ruffles and widely flaring chalices. The color range of the Gladiolus of today includes every tint and shade possible.

No blooms are more valuable in the midsummer and autumn garden than Gladioli. Their use is almost without limitation. The range of color available today enables them to share in any scheme. If the planting be properly timed they may be brought into bloom any time from June to November (and under glass, from November to June). The flowering season may be advanced or prolonged by planting in berry baskets or pans, keeping them in a protected frame until ready to set outdoors into the garden where a vacancy invites it.

They are invaluable for cut flowers, and it is well to have a few hundred bulbs planted in some out-of-the-way place, for a cutting patch for indoor and porch decoration. It is interesting in this connection to choose varieties whose colors will harmonize with the decorations of the various rooms of your home. In cutting the blooms four or more leaves should always be left upon the plant; this helps to restore nourishment to the parent corms.

Gladioli will give satisfactory results in any good garden soil. The depth of planting for the corms differs with the character of the soil. The lighter the soil, the deeper the corms should be set, and in dry seasons this deep planting is of great advantage, as it insures a cool and desirable environment for the roots. Deep planting has the further advantage of very largely doing away with the necessity of staking. In heavy, moist soils, however, there is danger in deep planting, as the soil may become too wet and cause the young shoots and even the corms to decay.

The general method is to plant in rows from 1½ to 4 feet apart, depending upon the method of cultivation to be employed. Dig a trench 5 inches deep and 2 inches wide at the bottom. Place the corms on the bottom of the trench 3 inches to 5 inches apart and then fill the trench with soil.

They like plenty of air and sunshine under which condition they will grow to perfection. In dry seasons they should be thoroughly watered; a little sprinkling in the evening is of only slight benefit; give them a thorough soaking so that the soil is wet 5 inches deep and then leave them alone for a week.

Cultivate after every rain or watering; keep the surface of the soil loose and open; give the oxygen a chance to get into the soil where things are growing.

Do not use fresh manure at planting time. Apply barnyard manure the previous fall or use bone meal in the spring. *Scheepers' Bulb Food* is best. (See page 31.)

Unpack the bulbs as soon as received and give them a thorough airing; keep in a good dry cellar until ready to plant.

YOU MAY HAVE BLOOMS IN YOUR GARDEN FROM JUNE UNTIL FROST

(We have ideal storage facilities and will be happy to keep the bulbs for you, making shipments at intervals during the growing season.)

Plant some Gladioli every week commencing as soon as all danger of frost is over. By keeping the bulbs in a cool, dry place, about forty degrees, they will keep and remain dormant as late as August. This will give you flowers from late June until frost.

Plant a few of the bulbs in berry baskets in early March, placing them in a frost-proof cellar or frame where they can make roots; when all danger of frost is over, plunge them, basket and all, into the places in the garden where they are wanted, and you will have fine blooms in late May and early June.

It is always well to have a quantity of Gladioli planted at various times in such baskets or in pots and pans growing in frames so that from time to time you may be able to fill vacant spaces in your borders by plunging these in for quick or immediate effect, very early or very late in the season.

Schepers' Gladioli

*"Flowers are the beautiful hieroglyphics of Nature,
by which she indicates how much she loves us."*

—GOETHE

This selection is arranged in conformity with the classification adopted by the Gladiolus Society. All varieties marked "Exhibition" are especially suitable for exhibition purposes, florets measure over 4 inches in diameter. Varieties marked "Decorative" produce florets measuring over 3½ inches in diameter. In selecting these varieties, special stress is laid on their value for decorative purposes. Varieties marked "Small Flowered" produce florets measuring less than 3½ inches across. They are especially selected for their decorative value, for use in bowls and for table decorations. This class includes the type previously listed as "Primulinus." (See Miniatures, page 10.)

Varieties marked "Early" bloom in from 70-80 days. Those marked "Midseason" come into flower in 85-90 days, while those marked "Late" take a few days longer to bloom.

ABU HASSAN. (Midseason-Exhibition) A glossy dark blue-violet which defies competition in this color class; buds appear black. To those who remember the popular "Pelegrina" we wish to state that Abu Hassan excels in both color and growth. It is the finest dark violet blue Gladiolus yet introduced. The color contrasts when combined in a bouquet with "Mother Kadel" is very charming. Extra fine cut flower and always a prize winner. *See illustration*, page 6. \$1.75 for 10; \$15.00 per 100.

ARC DE TRIOMPH. (Midseason-Exhibition) Clear lemon yellow. The finely placed ruffled blooms are large and nicely placed on strong stems. Long lasting in the garden and when cut. Extra fine variety. \$2.25 for 10; \$20.00 per 100.

ARTIST. (Early-Decorative) A new introduction of rare merit. Lovely lilac-violet with delightful narrow pencil stripe of white through each petal for a beautiful effect. Strong grower with many of the well placed florets open at one time. Should be in every collection. \$1.35 for 10; \$11.00 per 100.

AUREOLE. (Midseason-Exhibition) Recent introduction of rare merit. A magnificent soft yellow with the blooms having a waxy sheen. Broad petaled round florets that are nicely frilled. Strong spikes with many florets open at one time. Very beautiful. \$1.50 for 10; \$12.50 per 100.

BLIZZARD. (Early-Exhibition) The large florets are pure white and attractively ruffled. Strong stems with many open at one time. Fine exhibition variety. \$1.75 for 10; \$15.00 per 100.

BLUE BEAUTY. (Midseason-Decorative) The best of the new blue originations. Light blue with edges of petals overlaid violet-blue. Large, wide-open florets of fine round form, 6 to 8 open at a time. Excellent spike with 20 or

more buds. Exquisite when combined with "Aureole" or "Dr. Fleming." *See illustration*, page 11, \$1.65 for 10; \$14.00 per 100.

BUCKEYE BRONZE. (Late Midseason-Exhibition) Of all the "smoky" or odd shades of Gladioli this is one of the most beautiful. The very large florets are rosy bronze, it is a strong grower and has a fine flower spike. A beautiful arrangement would be with "Aureole" and "Florence Nightingale." \$1.55 for 10; \$13.00 per 100.

BURMA. (Midseason-Exhibition) Heavily ruffled florets of rose-red lighter in the throat. Well placed blooms are held on strong stiff stems with as many as 10 open at one time. Exquisite when arranged in a bouquet with either "Leading Lady" or "Mother Kadel." Very popular; always a prize winner. *See illustration*, page 12. \$1.55 for 10; \$13.00 per 100.

CARNIVAL. (Midseason-Exhibition) Bright scarlet-red with large snowy white throat. Good strong grower, fine for exhibition. *See illustration*, page 5, \$1.85 for 10; \$16.00 per 100.

CIRCE. (Midseason-Exhibition) Russet-orange with a deep red blotch that is bordered with a thin yellow band. Very attractive. Six to eight of the eighteen buds are open at one time on a strong stem. Placement of the florets on the stem is perfect. Prize winner. \$1.55 for 10; \$13.00 per 100.

CLARENCE D. FORTNAM. (Late-Exhibition) Pale rose-pink blending to cream in the throat. The florets are heavily frilled with nine and more open at one time on a stately spike. Delightful when arranged with "Dark David" and "Gold." A great prize winner. \$1.75 for 10; \$15.00 per 100.

DIEPPE. (Midseason-Exhibition) This is by far one of the finest "Glads" introduced to date. The salmon-scarlet florets are six inches wide, well placed and with seven to nine open at one time. Florets are well rounded of fine texture and delightfully ruffled. *See illustration*, page 6, \$1.55 for 10; \$13.00 per 100.

DR. FLEMING. (Early-Exhibition) Very bright pink shaded lighter on the lower petals and to almost white deep in the throat. A very pleasing color combination. The florets are large and heavily ruffled at the edges. The full spike has ten florets open at one time. Highest honors at the shows. \$1.25 for 10; \$10.00 per 100.

ELIZABETH THE QUEEN. (Midseason-Exhibition) Beautiful lavender-mauve, the color running far down in the throat of the extra large florets. It has a reddish stipled feather deep in the throat with some flaking of the same color running through the lower petals, which seems to add character to the bloom. The long flower stems with 8 and more blooms open at a time make this an ideal exhibition variety. Beautiful under artificial light. Winner of highest honors including an Award of Merit at the Quebec Show. Best variety winner at Exposition Institute Agricola, Belge Au, Canada. Award of Merit New York. \$1.55 for 10; \$13.00 per 100.

EVANGELINE. (Midseason-Exhibition) Light pink of great charm. This is a beautiful Gladioli. Eight or nine delightfully ruffled florets are open at one time on a spike having from 18 to 20 buds. A great prize-winner. \$1.45 for 10; \$12.00 per 100.

FIRE GLEAM. (Midseason-Exhibition) Fiery scarlet with a warm glow to the bloom with a thin white line in the throat. The florets are nicely ruffled and well placed. You will see from our color illustration that this is a very beautiful "Glad." *See color illustration*, page 11. \$2.25 for 10; \$20.00 per 100.

FLORENCE NIGHTINGALE. (Midseason-Decorative) One of the finest of the snow white varieties; slightly ruffled. Well arranged on tall flower spikes. Five inch florets. Winner of highest awards wherever shown. \$1.65 for 10; \$14.00 per 100.

FRIENDSHIP. (Early-Decorative) A new introduction of exceptional merit. A frosty shade of pure pink with a waxy white and cream throat to add to its beauty. Large, well rounded florets, opening wide of excellent texture and being nicely ruffled. An exhibition variety of rare beauty. Long list of prizes to its credit as the best pure pink. *See illustration*, page 11. \$1.75 for 10; \$15.00 per 100.

GAIL. (Midseason-Exhibition) Light lavender shading deeper toward the edges of the petals; delightful rose-cerise throat mark for a most pleasant color combination. Extra strong grower. *See illustration*, page 6. \$2.25 for 10; \$20.00 per 100.

GENERAL EISENHOWER. (Midseason-Exhibition) Deep clear pink, undoubtedly the best pink introduced to date. 8 enormous florets open at one time, very well placed and held on strong stiff stems. \$1.75 for 10; \$15.00 per 100.

GOLD DUST. (Early-Decorative) Deep yellow, earliest flowering of all in this shade. A very fine companion with "Artist". Strong grower with many florets open at one time. \$1.55 for 10; \$13.00 per 100.

HAWAII. (Midseason-Exhibition) A very unusual variety. Florets are maroon with a distinct white edge for a lovely effect. Strong grower with many blooms open at one time. \$1.75 for 10; \$15.00 per 100.

HEART O'GOLD. (Early-Exhibition) Snow white with golden marks at the throat. A delightful color combination, ideal for decoration. Nice butterfly-shaped florets. *See illustration*, page 11. \$2.25 for 10; \$20.00 per 100.

HOPMAN'S GLORY. (Midseason-Exhibition) Clear soft yellow and a very beautiful variety. It may well be considered an "Early Flowering" variety as it is the first of the soft yellows to flower. Beautiful arrangements can be made with "Spic and Span" or "Fire Gleam." Strong grower and many florets open at one time. \$1.45 for 10; \$12.00 per 100.

JOHAN VAN KONYNENBURG. (Midseason-Exhibition) The largest and finest orange-red variety introduced. Awarded 1st prize for the best large flowered Gladioli at the great International Gladioli Show in Haarlem, Holland. Introduced and named in honor of Holland's foremost hybridizer. Perfect arrangement with "Pactolus." \$1.65 for 10; \$14.00 per 100.

JOHANN STRAUSS. (Early-Exhibition) One of the earliest varieties to flower in the garden. Very large florets of light clear red. Strong heavy spikes with from ten to twelve florets open at one time. Beautiful when arranged in a bouquet with two other 'early' varieties, "Dr. Fleming" and "White Gem." \$1.45 for 10; \$12.00 per 100.

LADRONE. (Late-Exhibition) Deep salmon with a golden throat. A lovely variety that is ideal for decoration, nice willowy spikes with florets well placed. *See illustration*, page 5. \$1.75 for 10; \$15.00 per 100.

LEADING LADY. (Midseason-Exhibition) Creamy white with a slightly darker throat, considered by many as the best in this color class, winning prizes at all shows. It is a sport of the famous "Picardy" having all the same fine characteristics. The fine placement of the nicely ruffled florets adds much beauty and charm. Heavy spike with many florets. \$1.60 for 10; \$13.50 per 100.

LEIF ERICSSON. (Midseason-Exhibition) New introduction of very special merit. Pure cream with 8 to 10 neatly placed florets well placed on tall, strong stem. Florets are very large and slightly ruffled. Prize winner at every show this past season. \$2.00 for 10; \$17.50 per 100.



Five Charming Gladioli

CRUSADER
See page 10

PACTOLUS
See page 7

CARNIVAL
See page 3

CROWN JEWEL
See page 10

LADRONE
See page 4

GLADIOLI COLLECTIONS — see page 8



(Miniature) THE ORCHID — See page 9

*"Who loves a garden
comes to know
The purest time therein
to go
Is when the day has just
begun,
And dew lies sparkling
in the sun.
But Oh! the holiest time
of all
Is when the dusk begins
to fall
And all is veiled in
softest gray,
And thrushes sing their
vesper lay."*

—LYMAN



PINK RADIANCE — See page 7

Gladioli
Color Index

Inside Back Cover

Gladioli
Collections

See pages 8, 9, 10 & 12
NEW VARIETIES PAGE 10
"ALL-AMERICA" VARIETIES
PAGE 10



GAIL — See page 4



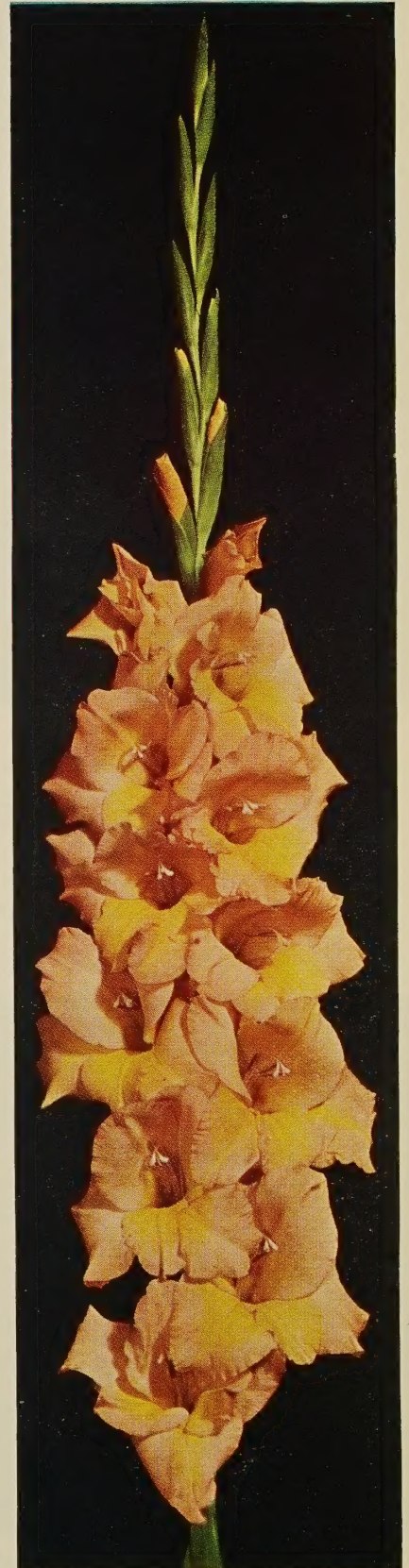
FRAGRANT
GLADIOLI GWEN —
See page 10



DIEPPE —
See page 4



ABU HASSAN — See page 3



PATROL — See page 7

MARGARET BEATON. (Midseason-Exhibition) Still very popular. It has been a repeated prize winner in all shows. Snowy white with a vermilion-pink blotch deep in the throat, greatly adding to its distinctiveness. Tall spikes with 6½-inch florets well arranged, and 8 open at a time. Should be in every collection. *See illustration*, page 11. \$1.50 for 10; \$12.50 per 100.

MERRY WIDOW. (Early-Exhibition) Beautiful lilac purple with a large white blotch in the throat. Most outstanding and a prize-winner. Strong stems with 8 to 10 perfectly placed florets open at one time. Beautiful in a bouquet with Leif Ericsson. \$1.75 for 10; \$15.00 per 100.

MORNING KISS. (Early-Exhibition) Fine pure white flowers, tall, straight spikes with eight and more florets open at one time and the buds showing color for a fine effect. Best of the early flowering varieties. \$1.45 for 10; \$12.00 per 100.

MOTHER FISCHER. (Late-Exhibition) Most beautiful of all snow white ruffled glads. Across the country at all leading shows it was awarded top honors yearly. Can be grown 6½ feet tall with a flower head 3 feet long. Finely placed florets are produced with many open at one time. Always a prize winner. \$1.95 for 10; \$17.00 per 100.

MOTHER KADEL. (Midseason-Decorative) Clear medium yellow, slightly deeper in the throat, with no other markings. The large blooms, 4 to 4½ inches across, are well placed, with 5 to 7 open at one time. A tall grower with from 15 to 17 buds. This outstanding variety has received highest awards wherever exhibited, American Home Achievement Medal, three Special Awards at the "Gardens on Parade," New York World's Fair, Honorable Mention and best seedling at the Empire State Show. \$1.60 for 10; \$13.50 per 100.

NOWETA ROSE. (Midseason-Exhibition) This sensational new variety was voted seedling champion and Grand Champion at the New York show. It has taken top prizes across the country, truly a Grand Champion. It is a clear cool lavender-rose with the blooms nicely ruffled. It grows 5 to 6 feet tall and 12 to 15 of the 24 buds are open at one time on strong stems. One of the finest new introductions to date. \$2.25 for 10; \$20.00 per 100.

OCTOBER SUNSHINE. (Midseason-Exhibition) This beauty is well named. Light orange with a blending of golden yellow, further enhanced by a yellow throat mark. Extra strong grower with 7 nicely placed florets open at one time. \$1.45 for 10; \$12.00 per 100.

PACTOLUS. (Midseason-Exhibition) Handsome golden buff with a striking scarlet blotch at the base of the two lower petals. A splendid grower with all spikes matching in beauty with 8 and more blooms open at a time. *See illustration*, page 5. \$1.75 for 10; \$15.00 per 100.

PATROL. (Midseason-Exhibition) Clear apricot with golden yellow throat by far one of the most beautiful Gladioli to date. 10 or more perfectly placed florets open at one time on a tall strong flower spike. Fine for exhibition and always a prize winner. *See illustration*, page 6. \$2.05 for 10; \$18.00 per 100.

PICARDY. (Early-Exhibition) The finest Gladiolus in its color class. Of soft shrimp-pink without flecking. Blotch of light flesh-pink, shading to shrimp-pink at edges. Inconspicuous feathering of Begonia-rose. 7 to 10 florets open at a time with blooms up to 6 inches or more across. Spike is strong, but at the same time very refined. This variety has been the sensation of the "Gladiolus" world since its introduction. (Our stock is the selected improved strain that is disease free.) \$1.45 for 10; \$12.00 per 100.

PINK RADIANCE. (Midseason-Exhibition) Pure light silvery pink without marking with the exception of a light peppering of carmine deep in the throat; this adds to the attractiveness of the blooms. The spike is graceful with 6 to 8 florets open at a time. This lovely variety is a prize winner. *See illustration*, page 5. \$1.50 for 10; \$12.50 per 100.

RAVEL. (Midseason-Exhibition) This large flowered variety is violet-blue with a garnet throat marking. The large florets are of heavy texture and are well placed on strong stems. A combination with any of the smoky varieties would be very pleasing. \$1.60 for 10; \$13.50 per 100.

RED WING. (Midseason-Exhibition) One of the finest red varieties introduced to date. The scarlet-red blooms are darker in the throat for a charming effect. Very fine effect when arranged with "Aureole," "Abu Hassan" and "Snow Princess." Very striking. \$1.65 for 10; \$14.00 per 100.

ROSA VAN LIMA. (Early-Exhibition) One of the best in the pink shades. Light rose with a few darker lines in the throat which greatly adds to the attractiveness of this fine popular variety. Prominent on all exhibition tables. 8 or more well placed blooms open at one time on a strong, straight spike. *See illustration*, page 12. \$1.45 for 10; \$12.00 per 100.

SALMAN'S GLORY. (Early-Exhibition) This is a Holland introduction of rare beauty. Creamy white with a very showy carmine blotch edged with yellow. The florets are extra large, many times measuring 8 inches across with 7 and more open at one time. Considered the best Holland introductions to date. \$1.50 for 10; \$12.50 per 100.

SNOW PRINCESS. (Midseason-Exhibition) This lovely variety is one of the most popular of all the whites. Purest white with slight cream markings in the throat. Long, straight flower stalk with many florets open at one time. For fine pastel shadings, arrange with "Elizabeth the Queen." \$1.55 for 10; \$13.00 per 100.

SWEET SIXTEEN. (Midseason-Exhibition) Pure pink without ruffles. This 1952 introduction is beyond doubt one of the finest of the "pink" varieties to date. Strong spikes with as many as 9 open florets at one time. The perfect flower arrangement makes it an exquisite flower for cutting. \$1.95 for 10; \$17.00 per 100.

SPIC AND SPAN. (Midseason-Decorative) A ruffled beauty of deep pink with a trace of orange in the throat; 10 and more florets open at one time on an extra strong flower spike. This lovely flower has won highest honors in all flower shows the past few years; exceptionally fine. See illustration, page 29. \$1.65 for 10; \$14.00 per 100.

SPOTLIGHT. (Midseason-Exhibition) Beautiful deep golden yellow with a red blotch. Blooms are slightly waved and nicely placed on a straight willowy spike. This is a splendid color combination and a variety that is bound to become very popular. \$1.45 for 10; \$12.00 per 100.

WASHINGTON. (Midseason-Exhibition) Delicate light peachblossom rose. A very beautiful variety. Fine strong spike with many florets open at one time. Prize-winner. \$2.25 for 10; \$20.00 per 100.

WEDGEWOOD. (Midseason-Exhibition) The grace and beauty of this lovely variety lends itself admirably to decorative purposes. Nice ruffled florets of bluish lavender and a well placed cream blotch in the throat. Good grower and a long lasting flower. See illustration, page 12. \$1.75 for 10; \$15.00 per 100.

WHITE GEM. (Early-Exhibition) Pure white throughout. The florets are extra large and well placed on strong stems. The leader in the early white varieties. \$1.65 for 10; \$14.00 per 100.

WHITE LACE. (Midseason-Decorative) This is truly a little gem. As pure white as an "Easter Lily" and the florets are delightfully ruffled; the ruffling seems to go down into the throat of the floret for an exquisite effect. A variety much in demand for center pieces and wedding decorations. \$1.95 for 10; \$17.00 per 100.

"A flower often will reclaim a mood when nothing else will bring it back."
—CALTHROP

THRIP CONTROL — See page 13

Collections of Scheepers' Gladioli

COLOR ILLUSTRATED EXHIBITION COLLECTION

No. 1

All Prize-Winning Varieties

Consisting of 10 Extra Selected Corms each of the 10 varieties listed below. ALL VARIETIES WILL BE FOUND ILLUSTRATED IN COLOR PAGES AS NOTED:

	Page		Page
ABU HASSAN	6	MARGARET BEATON	11
BURMA	12	PACTOLUS	5
DIEPPE	6	PATROL	6
FRIENDSHIP	11	PINK RADIANCE	5
GAIL	6	SPIC AND SPAN	29

TOTAL 100 HIGHEST QUALITY CORMS

Regular Catalog Price \$17.30

Special Collection Price . . . \$15.00

No. 1A

Same as above, only half the quantity, 10 varieties as listed, 5 corms each:

TOTAL 50 HIGHEST QUALITY CORMS

Regular Catalog Price \$8.65

Special Collection Price . . . \$7.75

*See these spikes of gold and crimson
Mixed with those of misty white,
Apricot and orange yellow,
Glowing in the morning light.*

GARDEN COLLECTION

No. 2

Excellent for Garden or cutting

Consisting of 10 extra selected corms each of 10 extra fine varieties, a complete color arrangement. Descriptions will be found on pages as noted:

	Page		Page
ARTIST (Lilac-Violet)	3	ELIZABETH THE QUEEN (Lavender)	4
BLUE BEAUTY (Violet Blue)	3	HOPMAN'S GLORY (Yellow)	4
BUCKEYE BRONZE (Smoky)	3	JOHANN STRAUSS (Light Red)	4
CIRCE (Orange, Red blotch) 3		ROSA VAN LIMA (Light Rose)	7
DR. FLEMING (Pink)	4	SNOW PRINCESS (White)	7

TOTAL 100 HIGHEST QUALITY CORMS

Regular Catalog Price \$14.80

Special Collection Price . . . \$12.00

No. 2A

Same as above, only half the quantity, 10 varieties as listed, 5 corms each:

TOTAL 50 HIGHEST QUALITY CORMS

Regular Catalog Price \$7.40

Special Collection Price . . . \$6.50

*Salmon pink, with carmine markings,
Rich maroon ones, here and there,
Do you wonder that I love them,
My gladioli so fair?*

—HARRIET G. WILLHIDE

Scheepers' Miniature Gladioli

Delightful for vase arrangements and corsages.

These small-flowered Gladioli have received much attention the past few years. They are ideally suited for the bouquet as well as for informal or formal decorative arrangements. Varieties listed are all lovely and have been selected as the best of the newer varieties.

They lend a charm to the children's garden.

ATOM. This Miniature Gladioli has received much publicity for its fine colors and good growing qualities. Has a long flower head with 16 buds, 5 to 6 open at one time. A clear solid vermilion-red with a distinct silver penciling or picotee edge bordering each petal. \$1.50 for 10; \$12.50 per 100.

BETTY CO-ED. A lovely little gem. Soft creamy pink for a most pleasing effect. Delightful in a bouquet with "Snow Baby" and "The Orchid." \$1.50 for 10; \$12.50 per 100.

BO PEEP. Salmon-pink with cream throat stippled with pink. Delightfully ruffled. Award of Merit Chicago Show. \$1.50 for 10; \$12.50 per 100.

FLICKER. Orange with yellow throat and bright scarlet blotch. Very beautiful. \$1.50 for 10; \$12.50 per 100.

LITTLE GOLD. This is one of the finest little golden yellow Gladioli to date. Like a California poppy. Nicely ruffled and ideal for decorative purposes. \$1.75 for 10; \$15.00 per 100.

LOVELINESS. Pale pink with pointed petals and the florets face up for a very charming effect. \$1.45 for 10; \$12.00 per 100.

ORANGE BUTTERFLY. Most graceful of the Miniatures. The florets actually appear as butterflies in flight. Glowing bronzy orange with many florets open at one time. Prize winner. \$1.50 for 10; \$12.50 per 100.

STARLET. Pure white. This is the best of the white Miniature Gladioli and is always a prize-winner. The florets are delightfully ruffled. Very beautiful. \$1.45 for 10; \$12.00 per 100.

THE ORCHID. A wonderful flower; it looks much like a Cattleya Orchid. The flowers range in a natural spread of petals and have peculiar lasting power. It has lacinated edges and beautiful ruffling, and suggests the exquisite coloring of the orchid, lavender-pink upon the paler flushed, frosted surface. See illustration, page 5. \$2.25 for 10; \$20.00 per 100.

*Springtime, O Springtime, what is your secret,
The bliss at the core of your magical mirth,
That quickens the pulse of the morning to wonder
And hastens the seeds of all beauty to birth,
That captures the heavens and conquers to blossom
The roots of delight in the heart of the earth?*

—SAROJINI NAIDU



BO PEEP

"He who becomes impassioned of a flower, a blade of grass, a butterfly's wing, a nest, a shell, wraps his passion around a small thing that always contains a great truth."

—MAETERLINCK

MINIATURE COLLECTION

No. 4

Consisting of 10 extra selected corms each of the 9 New Miniature Gladioli listed above, a complete color arrangement.

TOTAL 90 HIGHEST QUALITY CORMS

Regular Catalog Price \$14.40

Special Collection Price \$12.00

No. 4A

Same as No. 4, only 5 corms each.

TOTAL 45 HIGHEST QUALITY CORMS

Regular Catalog Price \$7.20

Special Collection Price \$6.50

Scheepers' New Novelty Gladioli

CHIVALRY. (Midseason-Exhibition) Very beautiful lavender-pink that is a strong grower and has from eight to ten florets open at one time on a strong stem. Soft shade and beautiful. *See illustration*, page 11. \$3.25 for 10; \$30.00 per 100.

CREAM ORCHIDS. (Midseason-Exhibition) One of the finest cream colored Gladioli to be introduced to date. Its smooth waxy texture, delightful ruffling and distinct lacinations gives each floret the appearance of an orchid. Blends well with any color scheme. *See illustration*, page 11. \$2.75 for 10; \$25.00 per 100.

CROWN JEWEL. (Midseason-Exhibition) Light rose-pink almost a lavender with a ruby throat. Delightful strong grower with many of its large florets open at one time on a strong stem. Exquisite. *See illustration*, page 5. \$2.25 for 10; \$20.00 per 100.

CRUSADER. (Midseason-Exhibition) Pure snow white flower with large marking of velvety purple on two throat petals. Beautiful contrast and an exhibition variety that is a sure winner. Try a few in your collection this year. *See illustration*, page 5. \$2.85 for 10; \$26.00 per 100.

DOLLY VARDEN. (Midseason-Exhibition) Rich salmon-pink with a clear cream throat. Extra large blooms 6 to 7 inches across, eight open at one time on towering spikes. Grand Championship winner at Iowa State Gladioli Show. \$2.45 for 10; \$22.00 per 100.

GOLD. (Midseason-Exhibition) Deep yellow—as deep as a yellow can be without showing orange. A yellow-gold that will take the place of any of the deep yellow varieties in a few years. The tall sturdy spike holds sixteen florets with as many as eight wide open at one time. Excellent for cutting and arrangement; beautiful arranged with “Crown Jewel” and “Gail.” Long list of honors at all shows. \$1.95 for 10; \$17.00 per 100.

GWEN. (Midseason-Exhibition) Fragrant Gladioli of rare beauty. Tall growing with up to 8 delightful florets open at one time on a strong stiff stem. Beautiful old rose somewhat lighter toward the edges of the petals. Extra fine for cutting and the pleasing fragrance is something new in Gladioli. *See illustration*, page 6. \$2.45 for 10; \$22.00 per 100.

HOWARD V. WRIGHT. (Midseason-Exhibition) A very beautiful pale yellow. Beautiful in a bouquet with the lavender “Elizabeth the Queen.” The five inch florets open wide and are delightfully recurved. Has fine deep green foliage. Highest honors at all shows since its introduction. \$4.25 for 10; \$40.00 per 100.

SALMAN'S SENSATION. (Midseason-Exhibition) New introduction of sensational beauty. A beautiful blue that is considered best in its class. The growth of the plant is amazing; it grows up to 6 feet tall with up to 7 florets open at one time. Side shoots from one bulb will many times flower as well. \$3.25 for 10; \$30.00 per 100.

SPECIAL NOVELTY COLLECTIONS

10 each of the above 9 varieties
5 each of the above 9 varieties

Catalog Value \$25.45
Catalog Value \$12.73

SPECIAL PRICE \$22.00
SPECIAL PRICE \$11.50

THE NEW “ALL-AMERICA” GLADIOLUS — Three years ago, leading Gladiolus hybridizers and growers, at a national Gladiolus convention, started the All-America Gladiolus Selections on its way. For thorough testing over the United States and Canada, thirty-one judges were chosen and four varieties have made the grade and are offered as follows:

— 1957 Introductions —

CARIBBEAN. (Early-Midseason) The delicate blue tones of this novelty present an unusual combination of rare blue-violet petals handsomely marked with a rich deep violet throat effectively edged cream. From 9 to 11 delightfully ruffled florets open at one time on a strong tall spike.

MAYTIME. (Early-Midseason) A light-hearted charm surrounds this brightly colored gladioli. The gracefully ruffled deep, pure pink florets with their contrasting large white throats bring back the memory of the freshness of May-blooming flowers. 8 to 10 florets open at one time on 5½ foot spikes. Delightful.

— 1956 Introductions —

APPLEBLOSSOM. (Early-Midseason) Predominating color is a clean, snowy white with a flush or corona of cool, rose-pink at the edges of the petals. Grows 5 feet tall with from 8 to 10 of the 5 inch florets open at one time. Prizewinner everywhere.

ROYAL STEWART. (Early-Midseason) Ruffled clear light red with from 10 to 12 of the 5 inch florets open at one time. Tall grower — 5 feet and more — good strong stem and the blooms are very well placed. Winner of many prizes across the country at leading shows.

Above 4 varieties priced as follows: \$2.50 for 6; \$5.00 for 12; \$9.50 for 25.



BEAUTIFUL GLADIOLI — LONG STRONG STEMS

FIRE GLEAM
See page 4

CREAM ORCHIDS
See page 10

FRIENDSHIP
See page 4

HEART O'GOLD
See page 4

CHIVALRY
See page 10



BLUE BEAUTY — See page 3



MARGARET BEATON — See page 7



BURMA — See page 3



WEDGEWOOD — See page 8

*Today 'tis Spring; the Hawthorn tree
Is green with buds; today maybe
She whom I think of thinks of me,
And finds the thought enough;
And when those buds are grown to leaves,
The thought wherein she scarce believes
Will grow perhaps to love.*

—ARTHUR W. E. O'SHAUGHNESSY

SPECIAL COLLECTION

Consisting of 10 bulbs each of the 23 varieties of
Gladioli illustrated in color in the catalog.

Total 230 Bulbs. Catalog Value \$46.05.

Special at \$40.00

Same as the above only 5 bulbs each of the 23 varieties.
Total 115 Bulbs. Catalog Value \$23.03.

Special at \$21.00



ROSA VAN LIMA — See page 7

Schepers' Gladioli Mixtures

FOR THE CUTTING GARDEN

*Named Varieties that appear in our Catalog Mixed By Hand for each order
This assures a well balanced color combination*

LARGE FLOWERED DELUXE (all colors). These choice corms are assembled as mentioned above and offered as a "Deluxe Mixture" of named varieties. This is very valuable material for the cutting garden. \$1.25 for 10; \$10.00 per 100.

MINIATURE (all colors). Smaller of flower, wiry of stem, dainty of form, they lend themselves particularly for artistic arrangement, and their decorative value is great as cut flowers for baskets, vase or other decoration. \$1.35 for 10; \$11.00 per 100.

MIXTURES ARRANGED TO SPECIFIC SHADES

The following SPECIAL MIXTURES are offered in specific shades, making them ideal for cut flower purposes where a certain color combination is desired. Large flowered varieties only:

Blue and Lavender Shades Orange and Yellow Shades Pink and Rose Shades
White and Light Shades Red and Scarlet Shades

\$1.35 for 10; \$11.00 per 100

Plant a few rows of Gladioli in your vegetable garden—they will add beauty to this spot and at the same time provide a cutting patch for indoor decoration.

Make plantings weekly—then you are assured of cut flowers all summer long.

"He who becomes impassioned of a flower, a blade of grass, a butterfly's wing, a nest, a shell, wraps his passion around a small thing that always contains a great truth."
—MAETERLINCK

OUR Gladioli Corms reach you absolutely free from thrips

(For Finest Results Spray the Plants)

Infestations may inadvertently come in from a neighboring untreated planting or may originate from bouquets of infested cut flowers that are consigned to the refuse heap after they have lost their freshness. In such cases spraying is recommended as a preventive or control.

Since the thrips are difficult to find on the foliage, a careful examination of the plants should be made as soon as they are up five or six inches, and if any "silvered" spots are noticed, the plants should be sprayed with a solution of tartar emetic, brown sugar, and water, prepared as indicated below. This solution does not injure the Gladiolus foliage as does the paris green and brown sugar combination formerly recommended.

	<i>Small Quantity</i>	<i>Large Quantity</i>
Tartar Emetic ..	1 ounce	2 ounces
Brown Sugar	4 ounces	8 ounces
or Molasses ..	5 tablespoonfuls	10 tablespoonfuls
Water	1½ gallons	3 gallons

The tartar emetic, like the brown sugar, is soluble in water. These ingredients should be stirred in a small quantity of water until dissolved and then diluted up to the quantity desired. If molasses is used, it can be added after tartar emetic has been dissolved. No agitation is required with this spray.

they have been treated with DDT during winter storage and again just before shipping.

Careful spraying, repeated weekly or every ten days until flowering begins, will do much toward insuring a normal crop of flowers. This can only be accomplished by destroying the insects before they have an opportunity to enter the buds.

To obtain the best results it is necessary to use a sprayer capable of sufficient pressure to produce a fine mist spray that will cover all leaf surfaces of the plant with tiny droplets. Do not apply so much spray that these droplets will unite and run off. If rain occurs within twelve to twenty-four hours after the application, the spray should be repeated.

If the spraying has been started early, and while the plants are small, the infestation should be so greatly reduced that no further treatments need to be made after the appearance of the first flowers. However, the last spray application should be so timed that it will be made as close to the beginning of the flowering period as possible.

For the convenience of our clients, we will be pleased to supply tartar emetic at the following prices:

Tartar emetic: ½-lb. package @ \$1.25 each
1-lb. package @ 2.25 each

"Hidden deep in the bulb lie the pledges of another life."



DOUBLE RUFFLED CAMELLIA BEGONIAS
(See color illustration, page 30)

DOUBLE RUFFLED CAMELLIA. This is the most popular type of all due to the exquisite formation of the flowers. They are excellent for planting in the border—in solid beds—or as specimen pot plants for patio decoration. Fine for window boxes too! Make excellent cut flowers. Available in the following colors:

Flesh Pink White Dark Red
Golden Yellow Clear Salmon Mixture of all colors
\$3.50 for 5; \$6.50 for 10; \$15.75 for 25; \$62.50 per 100.

PICOTEE. (Color illustration, page 30.) Blooms are like Camellia type except that they have a pencil stripe around each petal of the bloom. Very beautiful and attractive. Available in mixture of pastel shades only. \$3.50 for 5; \$6.50 for 10; \$15.75 for 25; \$62.50 per 100.

HANGING BASKET BEGONIAS (Illustration right). Delightful for piazza and summer house decorations as well as the rockery and window boxes. Often hundreds of blossoms from one of our large bulbs. Available in the following colors:

Rose Pink Golden Yellow Dark Red White
Mixture of all colors
\$3.50 for 5; \$6.50 for 10; \$15.75 for 25; \$62.50 per 100.

(Ten inch wire mesh hanging baskets with chain \$2.00 each)

MIXTURE OF ALL TYPES. In response to many requests for a collection containing all types and colors (except Hanging Basket types) we are pleased to make such an offer. Such mixtures will be made up for each individual order to assure a well balanced and colorful collection of bulbs. No difference in size of bulbs! We handle only one size — Our Superior Quality Bulbs. \$3.25 for 5; \$6.00 for 10; \$14.75 for 25; \$55.00 per 100.

Tuberous Rooted *Begonias...*

SCHEEPERS' SUPERIOR QUALITY CALIFORNIA GIANTS.

- *American Grown Bulbs!*
- *Shade Loving Plants — Easy to Grow!*
- *Flower All Summer Long from May to Frost!*
- *Colorful Leaves Added Attraction!*
- *Our Superior Quality Bulbs Produce Heavy Strong Plants Immediately!*

(Planting and cultural instructions sent with each order)

Our special exclusive strain represents the finest from California. All our bulbs are selected in the field at flowering time and we therefore can guarantee their trueness to type and color. (Hundreds of letters were received last summer from our clients telling us that they had never seen such exquisite flowers and fine healthy plants). Bulbs are ready for immediate delivery should you wish to start them indoors for planting in the garden later, or, we can ship at regular outdoor planting time in your garden border.

These colorful shade loving plants give an abundance of flowers from the end of May until frost; not only do the beautiful flowers add charm to that sometimes difficult spot in the garden, the leaf formations are most exquisite. Ideal cut flowers for vases or bowls—in the latter they may be used to float on the water for exquisite artistic arrangements.

* * *



HANGING BASKET BEGONIAS



CARNATION BEGONIAS

CARNATION BEGONIAS. Delightful flowers of a true carnation shape (see illustration above) with each petal nicely frilled and serated edges. Fine for garden planting, pot plants and when cut. Make beautiful corsages. Available in the following colors:

Flesh Pink	Dark Red
Golden Yellow	Mixture of all colors
White	

\$3.50 for 5; \$6.50 for 10; \$15.75 for 25; \$62.50 per 100.

SELECTED NAMED VARIETIES

So fine were these special types that they were segregated and named. All were pictured in "LIFE" magazine a short time ago and it caused much demand for these special named varieties. Supply Limited.

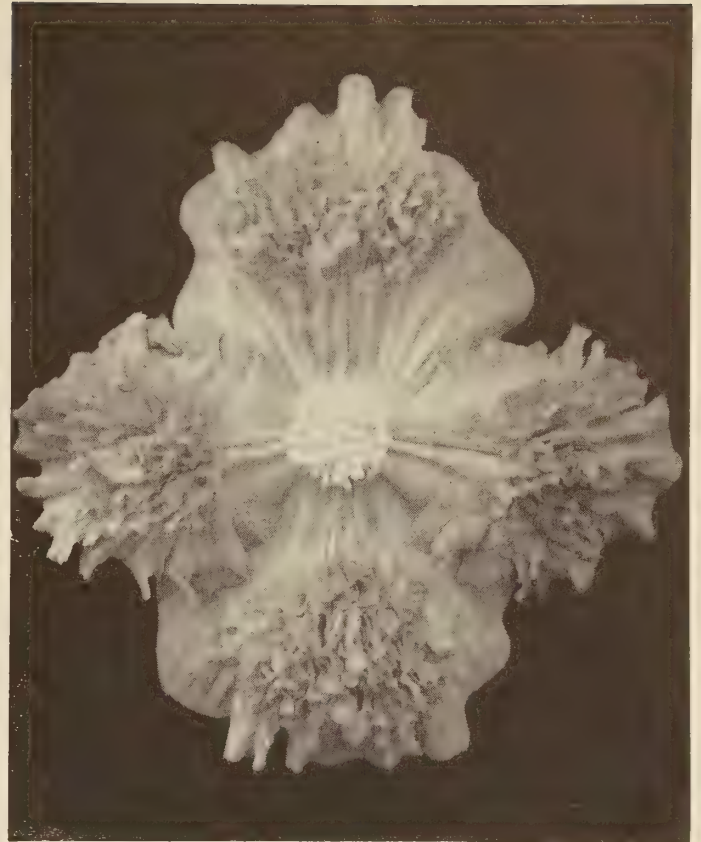
AUTUMN GLOW. An extremely large flower of the Cristata type, the crest being a deep copper, contrasting with the rest of the flower which is apricot. Blossoms often are 10 inches across. The foliage is very attractive and much more luxuriant than any other Tuberous Rooted Begonia.

RED TRIUMPH. This is a Camellia type bloom that has delightfully ruffled petals. Color is ruby-red with a velvety texture to the bloom. Very beautiful.

SUNSET. This is a Single Frilled or Crispa type with a delightful picotee edge. The color is light copper and each petal has an edging of scarlet. Very outstanding and attractive.

STARS AND STRIPES. Double Camellia type bloom. Flowers are brick red speckled with white and very beautiful indeed.

Any of the above 3 varieties are priced as follows: \$4.00 for 5; \$7.75 for 10; \$18.75 for 25.



CRISTATA BEGONIAS

CRISTATA OR BEARDED BEGONIAS. A single type that is slightly frilled, a coxcomb-like tuft or crest is borne on each petal for a delightful effect. A very novel form of Begonia. Available in mixture of Pastel Shades only. \$3.50 for 5; \$6.50 for 10; \$15.75 for 25; \$62.50 per 100.

MULTIFLORA BEGONIAS. (Illustrated below). Large numbers of small flowers are produced on short growing plants—ideal for edgings along the border or wild path—also ideal for pot culture. Supplied in mixture of pastel shades only.

\$3.50 for 5; \$6.50 for 10; \$15.75 for 25; \$62.50 per 100.



MULTIFLORA BEGONIAS

Miscellaneous Bulbs, Roots and Plants

For Flowering all Summer Long

ACIDANTHERA MURIELAE

Delightfully Fragrant

FRAGRANT ABYSSINIAN SWORD FLOWER. Foliage, general growth and habit of the Gladioli. Delightfully fragrant cream white flowers with a decided blotch at the base of each petal of plum purple. August and September flowering, same culture as for Gladioli. The JUMBO BULBS that we offer will produce more than one flower spike. Extra Selected Jumbo Bulbs, \$1.55 for 10; \$13.00 per 100.



THE LOVELY FRAGRANT ACIDANTHERA (See above)



AGAPANTHUS UMBELLATUS

AGAPANTHUS UMBELLATUS

(Blue Lily of the Nile)

These "African Lilies" are favorite plants for the conservatory or on the terrace garden or patio. Great umbels of trumpet flowers (30 or more when established) are produced on tall stems 3 to 5 feet high. The handsome foliage is an added attraction. Flowering period, July and August. Pot specimens.

HEAVENLY BLUE. Extra large root divisions, \$1.50 each; \$14.00 for 10.

PURE WHITE. Extra large root divisions, \$2.50 each; \$24.00 for 10.

CALLA LILIES

ELLIOTTIANA. The Golden Yellow Calla. Very fine for garden planting. Our large jumbo size bulbs will produce several flowers during the growing season. The beautiful large green leaves are charmingly spotted white. Extra selected bulbs, \$2.75 for 3; \$7.75 for 10.

REHMANNI. The Pink Calla. Not as tall as the yellow calla. Many flowers are produced during the growing season; delightful leaves. Quite rare. Extra selected bulbs, \$2.75 for 3; \$7.75 for 10.

FUNKIA

UNDULATA VARIEGATA. (Plantain or Day Lily) This delightful plant (also known as Hosta) may be grown in sun or shade and is very valuable as a ground cover. The leaves are a delightful light green with a white margin and are produced in large quantities from one plant. The flower stem is 24 inches tall and the blossoms, of light blue in umbels, are produced in profusion all summer. Fine for ground cover for a lily bed where it gives the much needed shade at the roots, also may be grown for a lovely effect in thin woodland as specimen plants. Increases rapidly. \$4.50 for 10; \$11.00 for 25; \$42.50 per 100.



EUCOMIS BICOLOR

EUCOMIS

BICOLOR. (Pineapple Flower) Hundreds of lovely cream colored flowers with a lilac rim at the center are produced on strong stems; topping each flower stem above the flowers is a delightful rosette of shiny green leaves. The stems are purple spotted. Grows about 18 inches high. Leaves are broad and shiny. Easy to grow — it is rare — and always draws immediate attention in the garden. *See illustration above.* \$2.00 for 3; \$6.00 for 10; \$14.00 for 25; \$55.00 per 100.

GALTONIA CANDICANS

Hyacinthus Candicans

The Great Snow White Summer Flowering Hyacinth. This Cape Hyacinth is a valuable summer-flowering bulb with long, slender leaves and a candelabra-like arrangement of thirty or so pure white, bell-shaped blossoms borne on a scape from 3 to 4 feet tall. Distributed about the borders in groups or massed against shrubbery, they are very effective, giving lines of definition and strength to the riotous growth of summer flowers. Planted with Gladioli they form an imposing contrast and last a long time in bloom. In every way they may be treated like Gladioli, but south of Philadelphia the bulbs may be left out-of-doors over the winter with a light covering and will increase and give better results every year. Extra selected bulbs, \$3.00 for 10; \$7.00 for 25; \$27.00 per 100.

GLORIOSA

The climbing Lily of South Africa

The lovely large reflexed lily-like flowers are very beautiful indeed. The stamens and pistel are very pronounced greatly adding to their beauty. One flower arranged in a corsage will immediately cause attention as they are not well known and look so much like an orchid. Need some support — a trellis or canes as they climb 3 to 5 feet. Also fine as pot plants where they can be trained for effect on well arranged wires. 15 and more flowers per plant.

ROTHSCHILDIANA. Orange with scarlet tips to the petals. Beautiful yellow anthers. Extra selected large tubers: \$1.75 each; \$5.00 for 3.

HIBISCUS (Rose Mallow) HARDY

New Hybrids of rare merit. Flowers are as large and larger than a dinner plate. Strong plants with extra good foliage. Covered with flowers July to frost.

CLOWN. Height 5½ ft. Beautiful light pink with dark eye.

POINSETTIA. Height 6 ft. Deep rose pink.

SATAN. Height 5½ ft. Deep dark — a beautiful plant.

Extra selected roots, \$3.50 each; \$10.00 for 3.



GALTONIA CANDICANS



ISMENE CALATHINA

ISMENE

Peruvian Daffodils

CALATHINA. Lily white flowers resembling an Amaryllis. The trumpet-like blooms are borne in clusters of from 3 to 4 flowers each. They flower about 6 weeks after planting. Delightful lily-like fragrance that is lovely. Extra selected large bulbs, \$6.75 for 10; \$16.50 for 25; \$65.00 per 100.

CALATHINA ADVANCE. While this new variety is the same color as Calathina the flowers are twice as large and it grows two feet high; very outstanding in the garden or grown as a pot plant. Delightfully fragrant. \$8.75 for 10; \$21.00 for 25.

TREATISE ON MISCELLANEOUS BULBS

ACIDANTHERA — Excellent for cutting, delightful fragrance.

AGAPANTHUS — Pot or tub specimens for the Patio.

CALLA — Specimens in border, around the pool.

FUNKIA — Especially as ground cover for Lilies.

EUCOMIS — Specimens in border, new, rare.

GALTONIA — Focal points in border, tall, exotic.

GLORIOSA — Around the Sun Dial or other climbing object, blossoms as corsages.

HIBISCUS — For screening a void area, as quick cover, large colorful blooms.

ISMENE — Border specimens, cutting for corsages, fragrance.

LUPINES — Tall straight spikes, like garden sentinels.

LYCORIS — Naturalize in wild path or in clumps in front of hedge row, effect delightful at distance.

OXALIS — Perfect for edging, delightful leaves, pretty blossoms a few weeks after planting and all summer long.

SPREKELIA — Garden specimens, as focal point.

TIGRIDIAS — To brighten that sunny spot.

TRITOMAS — Specimen plants.

TUBEROSES — Exotic garden fragrance, make beautiful corsages.

LUPINUS — Russell Hybrids

(Extra Hardy Type)

These long, symmetrical, closely furnished spikes with their distinctive colorings add great charm and glory to the border. Full red, clear yellow, pink and white, blue and white, and brown and cream are only some of the shades appearing in the fine mixture. 2 to 3 feet tall, they start to flower in June, continuing through the summer.

SCHEEPERS' SPECIAL MIXTURES of extra choice kinds. All specially selected for their fine qualities. Extra heavy, selected plants \$1.75 for 3; \$5.50 for 10; \$12.75 for 25; \$50.00 per 100.

LYCORIS

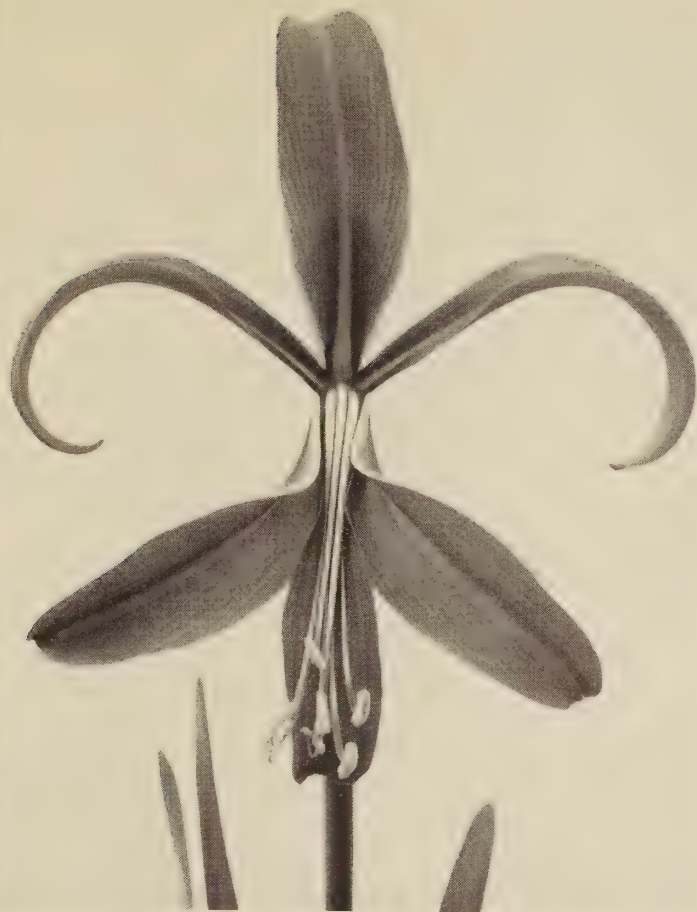
SQUAMIGERA. (*Amaryllis Halli*) A perfectly hardy bulb of the Amaryllis family. They produce attractive green foliage in the early spring which later dies away. About a month later (August) the flower stalks appear, growing about two feet high, and developing an umbel of large, Lily-shaped, delicate mauve-pink flowers. Excellent for naturalizing. See illustration below. Extra selected bulbs. \$3.00 for 3; \$9.50 for 10; \$23.00 for 25; \$90.00 per 100.

OXALIS

DIEPPE. Four leaf clover plant. Bright green clover-like leaves with coppery red flowers, 8 inches high, throughout the summer. Fine for naturalizing, for planting in the rockery as well as for a border plant. Make attractive pot plants as well. \$2.25 for 25; \$4.00 for 50; \$7.00 per 100.



LYCORIS SQUAMIGERA (THE LOVELY PINK AMARYLLIS HALLI)



SPREKELIA FORMOSISSIAM — MEXICAN FIRE LILY

MEXICAN FIRE LILY

Jacobean Lily

SPREKELIA FORMOSISSIAM. A fantastically beautiful flower of glowing velvety scarlet. Flowering from May through August, the Orchid-like bloom is ideal for cutting or the garden. It is carried on a strong stem 18 inches high and the glowing scarlet flowers are 6 to 8 inches wide and of the same depth. May also be grown indoors planted in pots or bowls.

A few—**JUMBO EXHIBITION SIZE BULBS**—\$3.00 for 3; \$8.50 for 10; \$20.00 for 25.

Limited Supply—**EXHIBITION SIZE BULBS**—\$2.00 for 3; \$6.00 for 10; \$14.00 for 25.

TIGRIDIAS

See illustration, right

Known also as the "Tiger" or "Mexican Shell Flower," few garden or conservatory plants can compare with them for brilliance. Colors vary from yellow and white to brilliant scarlet, all being deeply blotched and specked with crimson and maroon. Clumps of them planted in the borders are gorgeous. They flower all summer long.

PAVONIA ALBA. Very beautiful white.

PAVONIA CANARIENSIS. Very attractive yellow.

PAVONIA ROSE GIANT. Deep carmine-rose.

PAVONIA RED GIANT. A most attractive red.

Prices on above: \$1.50 for 10; \$3.25 for 25; \$12.50 per 100.

PAVONIA HYBRIDS. (Mixed) Very fine mixture, well graded. \$1.25 for 10; \$2.75 for 25; \$10.00 per 100.

TRITOMA

Red Hot Poker or Torch Lily

They grow from 3 to 4 feet high and send up a continuous display of flowers from late June until frost. Straight as a poker the lovely blossoms are produced on strong stems, the flower is 8 to 10 inches long and consists of hundreds of little bells coming out from the stem and about $\frac{3}{4}$ inches long — thus the name Red Hot Poker.

ROBUSTUS. Yellow at the bottom of the flower, with flaming scarlet top. A real red hot poker. Extra selected roots, \$2.00 for 3; \$6.00 for 10; \$12.00 for 25.

TUBEROSES

Fragrance of the Gardenia

(See illustration on page 36)

DOUBLE PEARL, EXCELSIOR. Beautiful pure white flowers of delicious fragrance. The umbel of blooms of waxlike texture are held on strong stems. Very fine for cut flowers and prized in the garden for their exotic fragrance. Extra selected bulbs, \$2.25 for 10; \$5.50 for 25; \$20.00 per 100.

MEXICAN SINGLE EVERBLOOMING. Same as above only single flowers. Four to five flower stems from each bulb. Extra selected bulbs, \$2.25 for 10; \$5.50 for 25; \$20.00 per 100.



TIGRIDIA "MEXICAN SHELL FLOWERS"

Montbretias

Graceful, Sparkling Flowers of Midsummer.
(See color illustrations on page 30)

They reflect the colors of the advancing season and lend a charming gaiety and lightness to the borders. For the best effect the bulbs should be set only a few inches apart, and in groups of not less than ten, toward the front of herbaceous borders or shrubbery. Thus planted, the sheaves of narrow leaves and slender, wiry arching stems strung with brilliant flowers, like miniature Gladioli, have the appearance of little fountains of bright color—rose, scarlet, yellow, orange, red, often marked with brown. They will flower for many weeks, from August into late October and set at intervals in a border, where blue and white flowers predominate, are delightful indeed with such gay patches of color. They may be planted from the earliest spring days until late June, according to the flowering dates you prefer. Long lasting qualities make Montbretias most desirable for cutting.

Large Flowered New Earlham Hybrids

HIS MAJESTY. Widely expanded flowers, remarkable for their great size, they are of pronounced rich yellow in the center, shading to brilliant scarlet with three segments heavily covered towards their tips with a rich crimson. The largest of all Montbretias. See color illustration, page 30. \$1.45 for 10; \$12.00 per 100.

JAMES COEY. Very large, well-expanded flowers of perfect form, with smooth broad petals, rich, deep vermilion-scarlet with golden orange lustre, center yellow with crimson blotches, very handsome. Award of Merit Royal Horticultural Society London. \$1.25 for 10; \$10.00 per 100.

JOAN OF ARC. Flowers very large and open, of perfect form with smooth broad petals, rich deep golden color, slight crimson markings in center, reverse of petals flushed orange. \$1.45 for 10; \$12.00 per 100.

LADY HAMILTON. Tall growing and producing large flowers of apricot yellow, with no other markings. Very beautiful. \$1.25 for 10; \$10.00 per 100.

LADY WILSON. One of the finest of the new Montbretias. Very large bright yellow flowers with orange sheen. A prize-winner and very handsome. See illustration, page 30. \$1.50 for 10; \$12.50 per 100.

NORWICH CANARY. A very fine variety and one of the lightest shades. Light canary yellow. Fine large flowers and a good grower. \$1.45 for 10; \$12.00 per 100.

PRINCESS. Brilliant ruby-scarlet flowers, yellow center that has small crimson blotches, very effective. A beautiful variety. \$1.45 for 10; \$12.00 per 100.

QUEEN MARY. A beautiful shapely flower, pale yellow petals with red tips and three of the petals crimson on the reverse side. Very attractive. \$2.00 for 10; \$17.50 per 100.

RHEINGOLD. Deep golden yellow, well expanding flowers having petals of very strong texture. Very fine. \$1.75 for 10; \$15.00 per 100.

STAR OF THE EAST. One of the finest Montbretias ever raised; flowers pale orange-yellow, with lemon yellow eye, expanding quite flat and held erect. The flowers are very large with best blooms often measuring five inches across. The size, vigor, color and habit are magnificent and unequaled. \$2.00 for 10; \$17.50 per 100.

SCHEEPERS' NEW EARLHAM HYBRID SPECIAL COLLECTIONS

No. 1

Consisting of 10 extra selected bulbs each of the above extra fine varieties.

TOTAL 100 HIGHEST QUALITY BULBS

Regular Catalog Price \$15.55

Special Collection Price . . . \$12.50

No. 1A

Same as the above, only half the quantity, 10 varieties as listed 5 bulbs each.

TOTAL 50 HIGHEST QUALITY BULBS

Regular Catalog Price \$7.78

Special Collection Price . . . \$6.50

SCHEEPERS' NEW EARLHAM HYBRID MIXTURE

A very choice mixture of named varieties of the Large Flowered New Earlham Hybrids. Each order is individually prepared so that a well balanced mixture can be assured.

25 HIGHEST QUALITY BULBS \$2.50

50 HIGHEST QUALITY BULBS \$4.75

100 HIGHEST QUALITY BULBS \$9.00

The long lasting qualities of Montbretias make them most desirable for cutting. It is well to have a few hundred bulbs set out in some byplace where the graceful stems may be copiously cut for house and piazza decoration.

Hemerocallis

Increase garden Beauty —
reduce labor costs.

Day Lilies — Delightfully Fragrant

EASY TO GROW — FLOWER ALL SUMMER LONG — REPRODUCE QUICKLY TO COVER
A BARE SPOT IN THE GARDEN — REQUIRE LITTLE CARE — DISEASE RESISTANT —
FRAGRANCE LIKE A LILY WITH THE LINGERING PERFUME OF THE GARDENIA

After careful study and trial of all the leading varieties that have been produced by the best hybridists in the country, we feel that our list of varieties is the finest obtainable. They appear on the Honor Roll of the 100 best varieties as selected by members of The Hemerocallis Society.

From early spring until frost this group of "Lilies" demands no special care in the garden. They are unsurpassed as to hardiness, freedom from disease and insect pests. Their five-month flowering period of bloom—still more for a southern garden where they will bloom two or three times a year—makes them valuable as a cut flower, in a perennial border, on slopes or banks to prevent soil erosion and for naturalizing in the garden or field.

Of easy and simple culture, they demand a reasonably moist soil, fairly rich, and prefer, but do not require, slight shade.

Absolutely hardy in all parts of the country. Blooms produced freely throughout the season. No bleaching, curling or wilting prematurely. Flowers during the evening. Placement of flowers, up and above the foliage. Fine strong stems. Foliage that is healthy to beautify the garden.

ANNIS VICTORIA RUSSELL. July, August flowering. Height, 32 inches. Finest yellow with a flush of apricot-orange deep in the bloom. Delightfully fragrant with strong stems and many flowers nicely arranged. It will be greatly admired in the garden or when cut for indoor decoration. Extra selected roots, Each \$1.50; \$12.50 for 10.

BIJOU. July, August flowering. Height, 24 inches. Semi-dwarf variety that blooms profusely on many branches, excellent for the garden border. The ground color is orange, overcast with rich fulvous red and a darker mid-zone. Starts to flower in July and continues through August. Extra selected roots, Each \$1.25; \$10.00 for 10.

HYPERION. July, August flowering. Height, 42 inches. One of the best and highest rated clear yellow Hemerocallis. The flowers are extra large and are clear lemon-yellow throughout, no other markings. Good strong grower and fine foliage for a delightful contrast. Extra selected roots, Each \$1.25; \$10.00 for 10.

LINDA. July, August flowering. Height, 38 inches. A typical polychrome. The lovely large ruffled flowers are a rosy cinnamon over a golden base for a delightful effect. Fine healthy green foliage and tall strong stem. Extra selected roots, Each \$1.25; \$10.00 for 10.

MAMIE LAKE. June, July flowering. Height, 40 inches. Rich rosy orchid with a deeper rose eye-zone, the sepals are lemon-yellow and the throat is lemon; a most pleasing effect. Very large open flowers with recurved petals and fine strong stems. Very attractive. Extra selected roots, Each \$1.50; \$14.00 for 10.



MIKADO

MIKADO. June, July flowering. Height, 36 inches. In a recent survey throughout the country, this variety was voted first out of 321 varieties, scoring 94.5 points. Rich orange with mahogany-red eye; the contrast is most pleasing and attractive. This variety has one of the longest flowering periods and frequently repeats in September. Extra selected roots, Each \$1.25; \$10.00 for 10.

MORNING GLORY. August flowering. Height, 32 inches. Deep old rose with well formed blooms; a very beautiful variety. One of the latest to come into blossom and each plant is a mass of flowers at that time. Extra selected roots, Each \$1.25; \$10.00 for 10.

MOROCCO RED. August flowering. Height, 38 inches. One of the finest of the new deep reds. Deep morocco red showing an orange tip deep in the cup. Well formed flowers and a very beautiful variety. Extra selected roots, Each \$1.50; \$14.00 for 10.

MRS. B. F. BONNER. June, July flowering. Height, 38 inches. This is a very large well rounded well formed flower of pale lemon color. Indeed a handsome flower. Blooms over a long period and has good foliage. Fine fragrance. Extra selected roots, Each \$1.50; \$14.00 for 10.

MRS. HUGH JOHNSON. July, August flowering. Height, 38 inches. A delightful new bright red with a Gardenia fragrance. The flower has a satiny sheen and is lovely indeed. Fine strong foliage and stem. Extra selected roots, Each \$1.75; \$17.00 for 10.

OPHIR. July flowering. Height, 42 inches. This fine variety of exceptional merit has large dark golden yellow flowers of finest texture. A tall and vigorous grower. Each, \$1.25; \$10.00 for 10.

PATRICIA. June, July flowering. Height, 30 inches. This was second choice of recent poll, scoring 93.7 points. Pale, uniform yellow with tinge of lemon-chrome and greenish throat. The 5-inch blooms are very shapely. Exceptionally good evening bloomer. *See illustration, right.* Each \$1.25; \$10.00 for 10.

PINK CHARM. July, August flowering. Height, 40 inches. The lovely wide open large flowers have recurved petals. Deep coral pink with a star of cadmium-yellow deep in the center of the bloom. Finest pink to date. Fragrant. Repeats and blooms in the fall many times. Extra selected roots, Each \$2.00; \$19.00 for 10.

PURPLE WATERS. June, July flowering. Height, 38 inches. Repeats and blooms in the fall. Fine shaped flower of deep purple or wine red. Extra strong plant with fine foliage; one of the best of the dark flowering varieties. Lovely. Extra selected roots, Each \$1.25; \$12.00 for 10.



PATRICIA — See left

QUEEN OF GONZALES. June, July flowering. Height, 42 inches. Very large flowers of heavy substance deep chrome yellow. One of the finest of the new varieties with good strong foliage and fine fragrance. Extra selected roots, Each \$1.50; \$14.00 for 10.

THE GEM. June, July flowering. Height, 36 inches. Deep yellow-apricot blooms of fine substance and size, well placed on strong, wiry stems. Very outstanding. Each, \$1.25; \$10.00 for 10.

ALL SEASON NOVELTY COLLECTION

Consisting of 1 extra selected root each of 8 finest varieties. Selected for a prolonged flowering period and as the best of the new introductions.

ANNIS VICTORIA RUSSELL
 MAMIE LAKE
 MOROCCO RED
 MRS. B. F. BONNER
 MRS. HUGH JOHNSON
 PINK CHARM
 PURPLE WATERS
 QUEEN OF GONZALES

One extra selected root each, total 8 roots.

Regular Catalog Value . . . \$12.50

Special Collection Price . . . \$11.00

(3 collections — total 24 roots SPECIAL \$30.00)

GENERAL GARDEN COLLECTION

Consisting of 1 extra selected root each of 8 choice varieties. All garden favorites with an extended flowering period.

BIJOU
 HYPERION
 LINDA
 MIKADO
 MORNING GLORY
 OPHIR
 PATRICIA
 THE GEM

One extra selected root each, total 8 roots.

Regular Catalog Value . . . \$10.00

Special Collection Price . . . \$9.00

(3 collections — total 24 roots SPECIAL \$25.00)

LARGE FLOWERED
EXTRA HARDY
VARIETIES

Iris Kaempferi

INCREASE WITH
EACH SEASONS
GROWTH

(Late June, July Flowering)

ALL PRIZE-WINNING VARIETIES

The best skill of the ingenious hybridists has been extended to bring this, their splendid creation, to a high state of perfection. Today the great blossoms, which seem variously to be fashioned of delicate crepe, of lustrous satin, or rich velvet, exhibit an amazing range of hues, from gleaming white through tender grey to many tones of lavender and blue, and violet, from mauve through rose to claret to regal crimson-purple, many of them flushed or dappled, veined or margined with contrasting colors, creating an infinite variety of effects and beauty that has no peer. Truly "Orchids of the flower garden." They can be made happy and will grow in any garden.

AZURE. Double. Late flowering variety that greatly prolongs the flowering period. The heavily ruffled petals are a bright sky blue. A lovely variety. Extra selected clumps, each \$1.25; \$11.00 for 10.

BETTIE F. HOLMES. Double. Pure white. Flowers measure one foot across and do not burn. Considered the best of the white Iris. Fine for cutting. Extra selected clumps, each \$1.50; \$12.50 for 10.

HARBINGER. Double. Deep purple with a delightful golden yellow center. Earliest of all to flower in the collection. Lovely variety. Extra selected clumps, each \$1.25; \$10.00 for 10.

KATHERINE HAVEMEYER. Double. Clear sky-blue. A large and very beautiful Iris. Excellent for cutting, fine graceful foliage. Extra selected clumps, each \$1.25; \$10.00 for 10.

LA FAVORITE. Double. White delightfully veined blue and a rich purple center. Large flower, a very fine variety. Extra selected clumps, each \$1.25; \$10.00 for 10.

LIGHT-IN-THE-OPAL. Double. Light pink. A delightful contrast. Strong producer and a very fine iris. Extra selected clumps, each \$1.50; \$12.50 for 10.

LUCY MARSHAL. Double. Very large Pansy-violet with white veins. Center white with yellow spurs. Extra selected clumps, each \$1.25; \$10.00 for 10.

PYRAMID. Single. Deep violet-purple veined yellow deep in the center of each petal. Extra selected clumps, each \$1.50; \$12.50 for 10.

RUBY GIANT. Double. A stunning variety of ruby-red. Long lasting either in the garden or when cut. Extra selected clumps, each \$1.25; \$10.00 for 10.

COMPLETE COLLECTION OF IRIS KAEMPFERI

Consisting of one extra selected clump each of the nine varieties listed. Total, 9 extra selected heaviest clumps.

Catalog Value \$12.00
Special Collection Price 11.00

SEE COLOR ILLUSTRATION, PAGE 30

Delphinium

SEE COLOR ILLUSTRATION, PAGE 36

Our selection of choice Hybrids is the result of many years of careful selection in the nursery. Our stock is grown in a mountainous area to assure hardy plants with long rugged root systems.

Pacific Coast Hybrids

TALL GROWING TYPE — 5 to 6 feet
PACIFIC HYBRIDS IN SEPARATE SHADES

- LIGHT SHADES
- DARK SHADES
- MAUVE SHADES
- WHITE SHADES
- MIXED SHADES

Extra Selected Clumps. Hardy Stock.
\$5.00 for 3; \$14.00 for 10; \$33.00 for 25.

Belladonna

The flowers of this hardy Larkspur are poised like a sky-blue Butterfly on slender, stiff stems, away from the main stalk. They are of an exquisite, heavenly, turquoise blue. They grow 3 feet high.

The habit and growth of this plant is very graceful. Planted in front of Regale or Madonna Lilies, or in front of the taller Hybrid Delphiniums, they create a lovely effect. Established plants produce a number of spikes, giving three crops during the season. Our stock is the true improved strain. Extra selected clumps, \$10.00 for 10; \$23.00 for 25.

Wild Flowers — Rock Plants

(PLEASE ORDER EARLY)

Of the thousands of varieties that are known many are not suitable for transplanting from their natural habitat. We have selected 7 varieties that may be planted in the spring for finest effect this season. Many are nursery grown. They are all hardy and will increase in beauty with each season's growth, with a minimum of care. Good woody soil being the most important requirement.

We have noted in our description of the plants the most suitable situation for growing. They will all thrive in the perennial border with just a little extra care to their requirements. Beautiful foliage, flowers and unusual in most gardens. Fine for the Woodland Garden, under the Trees, Along the Brook, Rock Gardens and Rocky Ledges and lovely in the Perennial border.

ARISAEMA TRIPHYLLUM (Jack-in-the-Pulpit). Attractive single flower. Bulbous plant ranging from 6 inches to 3 feet. Interesting flower with reddish colored seed cluster replacing flower. April to July flowering range. Prefers moist soil but will grow under most average conditions. Woodland or north side foundation plantings. Extra selected plants, \$4.00 for 10; \$9.00 for 25.

CAMPANULA ROTUNDIFOLIA (Blue Bells of Scotland). A very dainty flower for rock garden or woody ledges. Prefers sandy soil. Very hardy. Small violet bells drooping from wiry stems, 6 to 18 inches high. Extra selected plants, \$4.00 for 10; \$9.00 for 25.

HEPATICAC ACUTILOBA (Sharp-lobed Hepatica). An evergreen plant 6 to 8 inches high with beautiful mottled leaves. Flowers are lilac-white to pale purple and produced in May and June. Fine for a ground cover in shady moist place; also good in the rockery. Extra selected plants, \$4.00 for 10; \$9.00 for 25.

HEPATICAC TRILOBA (Round-Leaf Hepatica). The vivid colors of these flowers from deep pink through blue make it very valuable in the garden or rockery. In addition, the fall colorings of the leaves form deep scarlet red to rich brown are most attractive. Readily naturalized and it may be planted in full sun. \$4.00 for 10; \$9.00 for 25.

LOBELIA CARDINALIS (Cardinal Flower). A hardy plant, 2 to 4 feet high, bearing long spikes of brilliant red flowers. Especially attracts Ruby-throated Humming Birds. Suitable for moist brookside, borders or foundations, liking sun as well as shade. August and September flowering time. Extra selected plants, \$4.00 for 10; \$9.00 for 25.

MITCHELLA REPENS (Partridge Berry). A very beautiful trailing plant. Is evergreen, having a fragrant small bell-shaped flower but more attractive red berries which have a distinct flavor later in the season. An excellent ground cover in moist woodlands and side hill situations. Extra selected plants, \$4.00 for 10; \$9.00 for 25.

TIARELLA CORDIFOLIA (Foam Flower). A dainty trailing plant that should be in every wild flower garden as it is so easy to grow. It prefers some shade but will grow in the sun. The flowers are produced in masses on stems 10 inches high in late May. The heart shaped leaves turn bronzy red in the fall and remain colorful on into the winter months. Soon spreads and makes a nice ground cover. Late May flowering. \$4.00 for 10; \$9.00 for 25.



TIARELLA CORDIFOLIA (FOAM FLOWER)
ADIANTUM PEDATUM (MAIDENHAIR FERN)

SPECIAL COLLECTION OF WILD FLOWERS

Consisting of 10 Extra Selected roots each of the
7 Varieties Listed.

Total 70 Extra Selected Roots

Catalog Value \$28.00

Special Collection Price . . . \$25.00

HALF COLLECTION

Same as above but on 5 Extra Selected Roots of each

Total 35 Extra Selected Roots

Catalog Value \$14.00

Special Collection Price . . . \$13.00



ASPIDIUM MARGINALE
(Evergreen Wood Fern)



ADIANTUM PEDATUM
(Maidenhair Fern)



POLYSTICHUM ACROSTICHOIDES
(Christmas Fern)

Ferns

Every good garden requires the grace and charm of our native ferns. We list 8 of the most popular and best varieties for garden culture. They are all hardy and not too particular as to the soil conditions, so you are assured of good growth. Our suggestions as to location of planting coincides with their natural habitat. Excellent for the woodland where soon you will have large colonies for a lovely effect.

ADIANTUM PEDATUM (Maidenhair Fern). One of the better known ferns quite at home in most situations. Prefers partial shade. Fronds are delicate on a pedicel 6 to 18 inches high. Grows in clumps. Excellent for woodland. Extra selected clumps, \$4.00 for 10; \$9.00 for 25.

ASPIDIUM MARGINALE (Evergreen Wood Fern). Medium height, strong structure. One of the hardiest of ferns, growing as easily on ledges as in lowland. A good companion for "Aspidium Spinulosum." 2 to 3 feet high. Extra selected clumps, \$4.00 for 10; \$9.00 for 25.

ASPIDIUM SPINULOSUM (Toothed Wood Fern). Another evergreen with lace-like fronds. Used extensively in bouquets of flowers. Prefers moist places. Excellent for woodland. Height, 1½ to 2 feet. Extra selected clumps, \$4.00 for 10; \$9.00 for 25.

ASPLENIUM FELIX-FOEMINA (Lady Fern). A lovely fern, 2 to 3 feet in height, preferring moist soil. Very hardy. Clumps growing increasingly larger. Extra selected clumps, \$4.00 for 10; \$9.00 for 25.

DICKSONIA PUNCTILOBULA (Hay Scented Fern). A medium sized, light green fern, easy to grow. Forming endless carpets when planted in open pastures. One of the best for open border. Height, 2 feet. Extra selected clumps, \$4.00 for 10; \$9.00 for 25.

ONOCLEA STRUTHIOPTERIS (Ostrich Fern). A very hardy, handsome fern. Dark green, symmetrical, growing up to 5 feet. A separate seed stalk, plume shaped remains during the winter. Excellent for foundation planting, woodland and lowlands. Extra selected clumps, \$4.00 for 10; \$9.00 for 25.

OSMUNDA CLAYTONIA (Interrupted or Flowering Fern). A large, tall-growing fern whose fronds are interrupted with seed spores early in the summer. Fronds up to 8 inches wide and 4 feet tall. Extra selected clumps, \$4.00 for 10; \$9.00 for 25.

POLYSTICHUM ACROSTICHOIDES (Christmas Fern). An evergreen fern, 9 to 18 inches high, similar to the "Boston Fern." One of the hardiest, excellent for planting among shrubs of foundation plantings. Will stand open sun. Excellent for woodland. Extra selected clumps, \$4.00 for 10; \$9.00 for 25.

Special prices on 100 or 1000 lots — supplied on request.

COMPLETE FERN GARDEN COLLECTION

This complete collection of Ferns consisting of the 8 varieties listed on this page is excellent for planting in the perennial border, a foundation planting for a wall or house, or throughout the woodland. Planted according to the recommendations in the descriptions, keeping variation of heights in mind, they can be made into a delightful Fern Arboretum. The cut fronds are lovely too for indoor decoration.

10 Extra Selected clumps each of the 8 varieties as listed. Total 80 clumps.

Catalog Value . . \$32.00

Special Collection Price . . \$26.00

HALF COLLECTION

5 Extra Selected clumps each of the 8 varieties as listed. Total 40 clumps.

Catalog Value . . \$16.00

Special Collection Price . . \$15.00



SPECIAL GOLD MEDAL
Awarded us for Superior Dahlias

SCHEEPERS' *Dahlias*

The Choicest
of
All Varieties

We offer tubers strong in quality, selected from clumps which produced health, vigorous plants last season.

Natural Color Illustrations — See page 29

Large - Flowered Dahlias

For Color Index of Dahlias, see inside back cover

Dahlia lovers may with entire safety select at random the varieties offered by us or according to colors or forms they favor, as all are absolutely dependable, produced on stiff, straight stems that hold the flowers upright. It is our belief that a Dahlia, to deserve consideration, should above all have an upright, straight, strong stem so that the flowers face one squarely in the garden and stand up when used as cut flowers.

In the following collection you will find only the choicest varieties that have proven to be of superior merit over a number of years, healthy growers and strong producers are essential requisites. With confidence we offer the following list:



ARTHUR GODFREY — FORMAL DECORATIVE

ARTHUR GODFREY. (Formal-Decorative) Largest of all the Formal type Dahlias. Over thirteen inches wide and six inches deep at the Rutgers University trial gardens, eleven inches and more with no disbudding of the plant. Oriental red with orange and buff shadings. Wonderful vitality with extra strong foliage and a continuous bloomer through dahlia time in the garden. On many honor rolls and certified at the trial gardens. *See illustration, left.* Extra selected tubers, \$3.00 each.

ATOMIC YELLOW. (Semi-Cactus) Clear canary yellow. Since its introduction in 1948 it has been a consistent prize-winner at all shows. The flowers are large and delightfully formed, foliage is a nice green and very healthy for a fine contrast. A very beautiful Dahlia. Extra selected tubers, \$2.50 each.

CLARA CARDER. (Informal-Decorative) One of the finest for the garden or exhibition. Clear cyclamen-pink, a delightful color which draws immediate attention in the garden. Strong grower and fine stems. Extra selected tubers, \$1.00.

DIXIE WINE DOT. (Informal-Decorative) Bloom 10 to 12 inches, bush 6 feet. This is an unusually showy, variegated Dahlia that will attract immediate attention in your garden. The large white petals are dotted and splashed with bright rosy magenta. Has won three Achievement Medals and was certified in trial gardens. Extra selected tubers, \$2.00 each.



JANINE SAWYER — INFORMAL DECORATIVE

JANINE SAWYER. (Formal-Decorative) Very large blooms of pure white. Very imposing. As many as ten perfectly formed blooms are open at one time on a fine robust plant. First prize winner at the shows. *See illustration, left.* Extra selected tubers, \$1.50 each.

JERSEY'S BEAUTY. (Formal-Decorative) Probably the most popular of all Dahlias. Of clearest pink, the large, deep flowers are of perfect form and carried on fine stems. Extra selected tubers, \$0.75 each, \$6.00 for 10.

KIRSTEN FLAGSTAD. (Informal-Decorative) Rich chrome yellow with slight rose suffusion. Will flower early and continue to produce large delightful blooms throughout the season. A fine dependable variety for the garden. Extra selected tubers, \$1.75 each.

LAKESIDE BEAUTY. (Formal-Decorative) Bloom 6 to 8 inches, bush 5 feet. Color a clear amaranth pink with blendings of rose and creamy yellow. A wonderful cutting variety with long, stiff stems. Extra selected tubers, \$1.50 each.

MADONNA. (Informal-Decorative) This is a very large, pure white flowering Dahlia with blooms many times reaching 12 inches in diameter; opens well with a tight blossom and folds back to the stem for a depth of bloom up to 9 inches. Free flowering and lasts a long time in bloom. Prize Winner. Extra selected tubers, \$2.25.

FIVE STAR GENERAL. (Formal-Decorative) Bloom 10 to 12 inches, bush 5 feet. Light amaranth pink shaded yellow. A grand pastel shade. Derrill Hart Medal Winner. Extra selected tubers, \$1.75 each.

GENERAL EISENHOWER. (Incurved-Cactus) Fine deep red. Each petal of the bloom is delightfully waved for a charming effect. Plant is extra strong with good foliage and many blooms are produced during the season. A prize winner. *See illustration, right.* Extra selected tubers, \$1.75 each.

GOLDEN ECLIPSE. (Formal-Decorative) Of clear golden yellow with salmon and flesh shadings at the center. Producing fine, sturdy plants with the flowers carried well above the foliage. This Dahlia has been observed by us for a number of years and we consider it one of the most reliable. It is a fine cut flower, as well as an exhibition variety with wonderful keeping qualities. *See illustration, page 29.* Extra selected tubers, \$1.25 each.

JANE COWL. (Informal-Decorative) This wonderful Dahlia has been a success wherever grown. In color it is a warm buff and old gold, blending to apricot and rose at the center. Of ideal growth with strong spikes holding the flower well above the foliage. One of the best. Extra selected tubers, \$1.00 each.

JANE LAUSCHE. (Semi-Cactus) Bloom 10 to 12 inches, bush 5 feet. Beautiful soft bicolor tones of pale mallow purple with white tips. A truly wonderful Dahlia. An achievement medal winner that is on all three Honor Rolls. Extra selected tubers, \$2.00 each.



GENERAL EISENHOWER INCURVED CACTUS



OGDEN REID — INFORMAL DECORATIVE

MRS. GEORGE LE BOUTILLIER. (Informal-Decorative) Rich velvety crimson throughout. A very beautiful dahlia and a prize winner. The fine foliage is dark green and the blossoms are held well on strong stems. Exquisite. Extra selected tubers, \$1.00 each.

MRS. HESTER A. PAPE. (Informal-Decorative) A recent introduction that is a record breaker for prizes. American Home Achievement Medal winner at Baltimore and Cleveland; also on Honor Roll in the leading trial gardens. Reddish purple; fine strong grower and excellent foliage. Has won prizes in red as well as purple classes. Extra selected tubers, \$2.00 each.

OGDEN REID. (Informal-Decorative) Bloom 12 to 14 inches, bush 5 feet. Here is a big fellow and a very strong grower. Color a beautiful soft rose with a sheen of gold. Should be in every collection. See illustration, left. Extra selected tubers, \$1.50 each.

THE CARDINAL. (Semi-Cactus) A bright cardinal-red beauty that causes immediate attention in the garden or as a cut flower. Considered the best new red Dahlia. Delightful arrangement of petals. Large bloom and strong plant with attractive foliage. Extra selected tubers, \$1.75 each.

WHITE SUPERIOR. (Cactus) Pure white of very beautiful form. Selected as Grand Champion dahlia of the year a few years back and still a dahlia that cannot lose at the shows. Blooms are produced in abundance on strong stems. Strong grower. Extra selected tubers, \$1.50 each.

WORLD EVENT. (Informal-Decorative) Tyrian rose. Blooms have very high centers and are produced on strong stems. Many flowers are produced during the season on strong plants, with good attractive foliage. Extra selected tubers, \$1.50 each.

YELLOW STAR. (Cactus) Very beautiful deep yellow. It is one of the first varieties to come into flower and produces a large number of blooms. Cut in bud it readily opens in water; has long strong stems. Plant is well shaped and a delightful green for a perfect contrast with the yellow blooms. Prize winner. Extra selected tubers, \$1.50 each.

MAFFIE. (Semi-Cactus) This variety has had many honors wherever exhibited. Intense carmine, blooms of tremendous size and fine quality. Strong grower with fine foliage. Occasionally shows golden tips to center petals. See illustration, page 29. Extra selected tubers, \$2.25 each.

MICHIGAN WHITE. (Semi-Cactus) One of the best of the white cut flower varieties, blooms have fine substance and keep well when cut. A profuse flowering variety. Extra selected tubers, \$1.50 each.

**LARGE FLOWERED EXHIBITION
DAHLIA COLLECTION**

A complete color range — All Prize-Winners

Consisting of one tuber each of the following varieties:

- | | |
|--------------------|---------------------|
| Arthur Godfrey | Janine Sawyer |
| Atomic Yellow | Madonna |
| Five Star General | Mrs. Hester A. Pape |
| General Eisenhower | White Superior |
| Jane Lausche | Yellow Star |

TOTAL 10 EXTRA SELECTED TUBERS

Regular Catalog Price \$19.75

Special Collection Price . . \$17.50

**LARGE FLOWERED GARDEN
DAHLIA COLLECTION**

**All exquisite varieties for the garden,
cutting or exhibition.**

Consisting of one tuber each of the following varieties:

- | | |
|-----------------|----------------|
| Clara Carder | Maffie |
| Dixie Wine Dot | Michigan White |
| Golden Eclipse | Ogden Reid |
| Jane Cowl | The Cardinal |
| Jersey's Beauty | World Event |

TOTAL 10 EXTRA SELECTED TUBERS

Regular Catalog Price \$14.50

Special Collection Price . . \$12.50

If you do not require bulbs
this spring — would you be so
kind as to pass this catalog
on to a garden loving friend.
Thank you very much!



SPIC AND SPAN — See page 8

*Bulbs and Roots
that may be grown
in pots or tubs
as specimens for
Porch and Patio
decorations:*

**Agapanthus
Umbellatus
Begonias
Calla Lilies
Eucomis Bicolor
Gloriosa (Vine)
Ismene Calathina
Lilies
Sprekelia
Formosissima**



DAHLIA, MAFFIE — See page 28



DAHLIA, GOLDEN ECLIPSE — See page 27

"Scheepers" THE MOST TREASURED NAME FOR *"Bulbs"*



IRIS KAEMPFERI — See page 23



MONTBRETIA, HIS MAJESTY — See page 20



MONTBRETIA, LADY WILSON — See page 20



TUBEROUS ROOTED BEGONIA PICOTEE — CAMELLIA TYPE
See page 14

Single Dahlias

Great profusion of blooms all summer long.

Open centered flowers, with only one row of ray florets. These gems are excellent for the garden and for cutting. All grow from 2 to 4 feet high.

BISHOP OF LANDAFF. This fine variety may also be considered a Duplex as it has several layers of petals. Bright scarlet with a garnet center. The foliage is lacy and reddish bronze which makes it outstanding for Landscape effect as well as cut flower purposes. Extra selected tubers, \$1.25 each.

CANDLE LIGHT. Brilliant yellow with an artistic arrangement of petals at the center of the bloom. Fine strong stems and a nice plant. Extra selected tubers, \$1.50 each.

NEWPORT TRIUMPH. Beautiful rose-pink with golden lights. The petals are pointed and twisted for a delightful effect. Extra selected tubers, \$1.25 each.

PURITY. A very striking waxy white. Strong grower that produces large quantities of blooms all summer long. Strong stems. Extra selected tubers, \$1.25 each.

*"Great things are done when men and gardens meet
That are not done by jostling in the street."*



BISHOP OF LANDAFF

SPECIAL COLLECTION OF SINGLE DAHLIAS

Consisting of one extra selected tuber each of the above 4 varieties.

Regular Catalog Price \$5.25
Special Collection Price \$4.75

SCHEEPERS' BULB FOOD

for
GLADIOLI
MONTBRETIAS
IRISES
LILIES
DAHLIAS
*TULIPS
*NARCISSI
*and All Other
Bulbous Plants

*Spread some "Scheepers' Bulb Food" over the ground before you cultivate for the first time in Spring, then work it in as you cultivate. Repeat this performance when the flower buds appear. These two feedings will result in exhibition blooms at flowering time. For naturalistic planting we suggest a third feeding in September.

We have been asked by many friends to tell them what sort of plant food we use in growing our choice bulbs. We told them we had a special formula that gave health and long life to these plants. A few prevailed upon us to make up a quantity and let them try it in their own gardens. We did.

The extraordinary success that these gardeners met with and the enthusiasm resulting from it, have encouraged us to offer all our friends and patrons a chance to use the very same plant food in their attempt at producing healthy, luxuriant flowers with strong stems and exquisite colorings.

And so we present this opportunity for you to order some of SCHEEPERS' BULB FOOD, and we recommend that you try it with your next planting. It is almost entirely composed of organic matter and may be used with absolute safety in connection with the planting of bulbs at any time, in any soil, or with any other plants. It is also economical—a teaspoonful for each bulb is the average requirement.

A good plan is to spread a small quantity over the area where the bulbs are planted or around the growing plants before you cultivate. Worked into the soil in this way will show splendid developments in plants and flower buds.

We are sure that if you take advantage of this offer you will find it a very happy investment. (Directions for use contained in each bag or can.)

5-lb. can (good for approximately 375 bulbs), \$2.00
25-lb. bag (good for approximately 1250 bulbs), 4.00
100-lb. bag (good for approximately 5000 bulbs), 11.00

Miniature Dahlias

Supply Large Quantities of Cut Flowers

These Miniature types are so named because they are almost exact miniature reproductions of the large flowered varieties. They are especially suitable for decorative work in the home, and are also very attractively used in landscape work such as borders or for mass planting. A few of the real dwarf varieties also provide attractive coloring in the rock garden. Heights indicated for each variety.

These Miniature Dahlias require no disbudding, and can be planted closer together than the large-flowered varieties. For best culture, they should be grown without too heavy feeding.

ANDRIES ORANGE. (Semi-Cactus) 3 feet high. Bright orange. A very colorful variety. The fine healthy plants are covered with blooms during the summer; nice when cut in bud too. Extra selected tubers, \$1.00 each.

CORINNA. (Formal-Decorative) 3 feet high. These waxy bright yellow blooms are of fine texture. Nice green foliage and a good strong plant, adds to the attractiveness of this variety. Extra selected tubers, \$1.00 each.

FAIRY. (Formal-Decorative) 2½ feet high. Nice soft pink blossoms are held on strong stems. Ideal for the garden or for cutting. Extra selected tubers, \$1.00 each.

IKE. (Formal-Decorative) 3½ feet high. A tall growing blood red with long stems. A very strong grower and really a very fine new variety. Extra selected tubers, \$1.00 each.

JOKE. (Formal-Decorative) 2 feet high. Deep red with each petal of the bloom tipped white, a very charming effect. Extra fine variety for mass planting in a formal bed—sturdy grower, requires no stakes. Heavy flower producer throughout the season. Extra selected tubers, \$1.00.

LILLY BELLE. (Formal-Decorative) A Dahlia of sterling merit. Tall growing habit with many branches. A pleasing blend of pink and white. Many flowers are produced on this vigorous plant. Extra selected tubers, \$1.00 each.

LITTLE FIREBALL. (Formal-Decorative) The brightest red imaginable. A strong dependable grower of free habit. The contrast between the bronzy green foliage, the stems, and the fiery red blooms is really startling. A little gem. Extra selected tubers, \$0.75 each.

LITTLE WISTERIA. (Formal-Decorative) Very beautiful lavender with a darker almost purple center. Extra fine. Good grower and very free flowering. Extra selected tubers, \$1.00 each.



NEW MINIATURE WHITE FAWN

WHITE FAWN. (Formal-Decorative) 3½ feet high. Beautiful glistening white. Uniform blooms of fine form are held above the foliage for finest effect in the garden or when cut. Extra selected tubers, \$1.00 each.

“So now, in conclusion, do I recommend you, and me, and all of us, to the keeping of a happy and humble spirit, such as the love of a garden ought surely to engender.”

—In a Yorkshire Garden,
REGINALD FARRER

SPECIAL COLLECTION OF MINIATURE DAHLIAS

Consisting of one extra heavy tuber each of the above
9 very select varieties.

Regular Catalog Price \$8.75

Special Collection Price . . . \$7.75

Pompon Dahlias

(Also known as "Bouquet" and "Lilliputian" Dahlias)
(Excellent as Boutonnieres)

Fascinating for decorative purposes

This group is very valuable for decoration purposes as well as a garden plant—the bushy compact plants make a fine showing in the perennial border. Large quantities of cut flowers. All grow about 3 feet high.

AMBER QUEEN. A very outstanding variety of light bronze or amber. Nice, bushy plants with plenty of flowers throughout the season. Extra selected tubers, \$1.00 each.

"A garden is our happiest means for evoking Nature's mystic, as well as Nature's sensible music. It is in itself the consummate eloquence of the living silence of sunlight, a silence in which sunlight, with the aid of earth's elements, expresses itself in the lovely color of flowers."

—TEMPLE SCOTT

BETTY ANNE. A prize winner wherever shown. Soft, clear pink. One of the best of the newer varieties. Extra selected tubers, \$1.00 each.

EDITH MUELLER. Apricot suffused peach-red. A very attractive flower that is ideal for cutting. Fine healthy plant. Extra selected tubers, \$1.00 each.

INDIAN CHIEF. Red and white bicolor. Delightfully marked—the red petals are bordered white. Extra selected tubers, \$1.00 each.

LITTLE SNOW WHITE. At last we have a new pure white Pompon. It is a great improvement over the older varieties in every way. An excellent grower and exceptionally free blooming. Extra selected tubers, \$1.25 each.

MORNING MIST. This combination of white and lavender is new and distinct. The tall, bushy plants are covered with these beautiful little blooms from early season until frost. Extra selected tubers, \$1.00 each.

RED BABY. Bright red flowers. The best in this color class. Strong grower with full open blooms. Extra fine. Extra selected tubers, \$1.00 each.

SHERRY. Another new and distinct color in this class. This shade of purple is more readily described as "plum." The tall, bushy plants are covered with these beautiful little blooms from early season until frost. Extra selected tubers, \$1.00 each.

YELLOW GEM. The finest of the clear yellow Pompons. Extra selected tubers, \$1.00 each.



DELIGHTFUL POMPON BOUQUET DAHLIAS

SPECIAL COLLECTION OF POMPON DAHLIAS

Consisting of one extra heavy tuber each of the above
9 extra fine varieties.

Regular Catalog Price \$9.25

Special Collection Price \$8.00

Beautiful Garden Lilies

*Plant Them Now — Then Enjoy Their Beauty and Fragrance
in Your Garden This Summer*

They Increase in Beauty with Each Season's Growth

So that you may succeed with these inspiring plants and to obviate disappointments, we have selected, after many years of experimenting and careful study, from a host of varieties, the limited few that succeed in American gardens under ordinary care, when planted in the spring.



THE GOLDEN-RAYED LILY — LILIUM AURATUM MACRANTHUM IN A HAPPY LOCATION Color illustration, page 35

AURATUM. A veritable "Peacock among Lilies" and very robust. We offer imported Japanese grown bulbs only. There is a lingering charm about the garden in August. One feels the sense of departing beauty and hurries to enjoy what color and fragrance kind Summer has left in her flight. One of the best of all legacies is "Auratum," the golden-rayed lily of Japan, which was discovered on the slopes of snow-capped Fujiyama, growing wild and untouched in all the glory of its beauty.

This is one of the noblest of all lilies, favoring a cool, thin woodland where it is damp at the roots. Not a woodland plant in the sense that it grows in the thick of the forests, but it flourishes on the fringes of the woods, in glades and clearings, always among vegetation, which, while screening the lower part of the stem and keeping the ground cool, leaves the sun free to play on the blooms.

AURATUM MACRANTHUM. (Platyphyllum) This is the robust growing form; height 4 to 5½ feet, the stem is stout and attains a considerable height, the leaves are broad; enormous flowers, white, richly spotted yellow. Undoubtedly the choicest of all, and, superior to the type.

We have been successful in securing the same special strain of bulbs that we handled prior to the war. They are all especially selected for us and are free from disease.

Jumbo Size 13 to 14 inches in circumference, \$1.75 each; \$5.25 for 3; \$17.00 for 10.

Extra Large Size 11 to 13 inches in circumference. \$1.25 each; \$3.50 for 3; \$11.00 for 10; \$25.00 per 25.

Large Size 10 to 11 inches in circumference. \$1.00 each, \$3.00 for 3; \$8.00 for 10; \$19.00 for 25; \$70.00 per 100.

LILY GARDEN COLLECTIONS — page 40

CENTIFOLIUM. A beautiful and prolific lily; when established a sensation in the garden. In general appearance resembles a huge *Lilium Sulphureum* or *Brownii*, with long tubular, white flowers, colored and streaked externally with brown and flushed internally with yellow deep down into the throat of the blossom. A giant; 4 to 6 feet high. Absolutely hardy and free from disease. Mid-July flowering, plant 8 inches deep; likes full sun. Permanent in the garden for many years. *See color illustration*, page 36.

Extra Heavy Selected Bulbs: \$2.25 for 3; \$7.00 for 10; \$16.50 for 25; \$60.00 per 100.

FIRE KING. A NEW lily of very outstanding merit. It is by far the most brilliant lily in cultivation today. The blossoms are vermilion-scarlet with a peppering of small black dots running deep into the throat; the pistil is scarlet and the anthers deep brown for a charming contrast. We have seen as many as 40 of the brilliant flowers on a single 4 foot stem. The flowers face up and out from the stem; greatly enhancing its beauty in the garden and when used as a cut flower for indoor decoration. It is free from disease, hardy and naturalizes readily. Flowers from the end of June to the end of July and is long lasting when cut. Sure to become one of the most popular garden lilies. Plant 8 inches deep. *See illustration*, page 37.

Extra Heavy Selected Bulbs: \$1.50 each; \$4.00 for 3; \$11.00 for 10; \$25.00 for 25.

Scheepers' Quality Lilies -- The Finest Obtainable



THE GARDEN FAVORITE — LILIUM REGALE — See page 38

Lilies — The Focal Point of the Garden

July to September Lily Garden Collections

See page 40



Lilium — SPECIOSUM MAGNIFICUM

See page 39



Lilium — AURATUM MACRANTHUM

See page 34



LILIUM — CENTIFOLIUM
See page 34

SCHEEPERS' NEW STRAIN
DOUBLE ITALIAN TUBEROSES

Plant throughout the border and then
enjoy the exotic fragrance of this new
superior strain.



THE EXOTIC BEAUTY AND AROMA
OF THE TUBEROSE

See page 19



SCHEEPERS' HYBRID DELPHINIUM — See page 23



LILIUM FIRE KING — See page 34

HENRYI. One of the best border Lilies, reaching 8 feet and more in height when established, and bearing more than twenty flowers of a rich, deep orange-yellow. The petals of the flowers are rolled back like in the Speciosum Lily and they are very handsome. The stamens boldly diverge from it. The anthers are conspicuous for their size, color and extremely delicate poise. A partially shaded place, sheltered from winds, suits it best. It is a beautiful Lily. Stemroots; plant ten inches deep. August-September flowering. *See illustration, page 38.*

Jumbo Bulbs: \$1.00 each; \$2.75 for 3; \$8.50 for 10; \$19.00 for 25; \$70.00 per 100.

PHILIPPINENSE FORMOSANUM. (The Hardy Easter Lily) Pure white trumpet. This is the latest of all lilies to flower in the garden and it helps to prolong the beauty of the lily in the summer garden. September and October flowering. The long trumpet shaped blossoms measure 8 inches and more in length; it is easily naturalized and soon you will have colonies of the fine plants in the garden. Grows from 4 to 6 feet tall and the blooms are nicely arranged; 8 to 10 on a stem. Plant in a warm sunny location 5 to 6 inches deep. Our special strain of bulbs are guaranteed to be disease free.

Extra Selected Bulbs: \$3.00 for 3; \$8.00 for 10; \$18.00 for 25; \$70.00 per 100.

GEORGE C. CREELMAN. One of the outstanding introductions of recent years. The *true* Creelman Lily. Beautiful — permanent — prolific — hardy — dependable — easy to grow. Award of Merit, Royal Horticultural Society. This Lily is not to be confused with “seedlings” of the Lily, sometimes offered as Liliium Creelman. “Creelman” is beautiful in form and color, and artistic, while sturdy, virile, permanent, dependable and disease resistant. The long-lasting flowers, which are very large, often measuring 8 inches in length, carried in large numbers on strong, long stems, with fine foliage, resemble a Regal Lily of the best and truest type, with the bronzy tones more pronounced and a more intense yellow in the throat. It blooms 2 weeks after the Regal Lily, many flowers opening at one time. We have counted 35 perfect flowers and buds on a 6-foot spike. Very strong and vigorous grower, the entire plant has an appearance of well-being. We have found this Lily to be entirely free from ordinary diseases to which so many other Lilies are subject. Easiest of culture and one of the hardiest. Stem-rooting. Plant 10 inches deep. Extra heavy, specimen bulbs, \$1.50 each; \$4.00 for 3; \$12.50 for 10; \$25.00 for 25; \$75.00 per 100.



LILIUM GEORGE C. CREELMAN

Lily blooms are beautiful arranged in a corsage — especially recommended for this purpose are:

Auratum Macranthum	Speciosum Magnificum
Henryi	Tigrinum Flore Pleno
Speciosum Album Novum	Tigrinum Splendens



LILIUM, HENRYI — See page 37

REGALE. (The Regal or Royal Lily) One of the most beautiful, and one of the hardiest Lilies in cultivation, *Lilium Regale* is truly a royal Lily, worthy of a place in every garden; it is a lover of loam and sunshine. A vigorous grower with sturdy stems, 4 to 6 feet high, densely covered with long, linear-lanceolate foliage. Center of flower flushed with yellow, shading to white at the outer edges; externally the flowers are streaked with brown on the "ribs," shaded through the almost translucent petals with a delightful pearly tint; the contrast between the rich wine color of the reverse of the petals and the gold shading of the throat is extraordinarily beautiful.

The Regal Lily is very floriferous and, when thoroughly established, bears as high as eighteen and twenty flowers during the season. Like most other Lilies, it should be planted deep—at least 9 inches, should have good drainage, and when growing should be watered copiously with liquid manure as they are gross feeders. They succeed in any good rich garden soil.

In the herbaceous border, planted in clumps of five to twenty-five bulbs, they are especially attractive among the Delphiniums and other July-flowering perennials. Where these magnificent Lilies are planted in quantity, the air in the cool of the morning and in the evening is laden with a delightful perfume, exhaled from every blossom. See *color illustration*, page 35.

Extra Heavy Specimen Bulbs: \$1.25 each; \$3.50 for 3; \$11.00 for 10; \$25.00 for 25.

Extra Selected Bulbs: \$1.00 each; \$2.75 for 3; \$8.50 for 10; \$20.00 for 25; \$60.00 per 100.

LILIES AS A GARDEN INVESTMENT

There are many years of enjoyment in a lily planting. Varieties that we offer and the fine quality of stock supplied will assure many years of enjoyment in your garden. All varieties quickly naturalize and you can look forward to increased beauty with each seasons' growth.

*"All still and Lily-scented,
The garden seemed to say:
'Oh, weary one, come, enter
And cast your cares away.'
For tall and white the Lilies
Like guardian angels stood,
To ward away the evil
And encompass the good.
To turn away thoughts world-wise,
To want and see and hear
The God-like, silent message
Of things that bless and cheer."*

—LYMAN



LILIUM TIGRINUM SPLENDENS
See page 40

SPECIOSUM LILIES

Fragrant — Dependable — Beautiful

Permanent in your garden

Lilium Speciosum both pure white and pink is deservedly one of the greatest favorites as a border plant, of daring as well as beautiful form. The petals are well rolled back and are handsomely spotted, often branded with distinct color. The style is thrown out in a curved line of much grace and strength. The stamens boldly diverge from it. The anthers are conspicuous for their size, color and extremely delicate poise. In addition to all these attractive qualities it has a strongly waved outline to the petals, which adds much to its beauty.

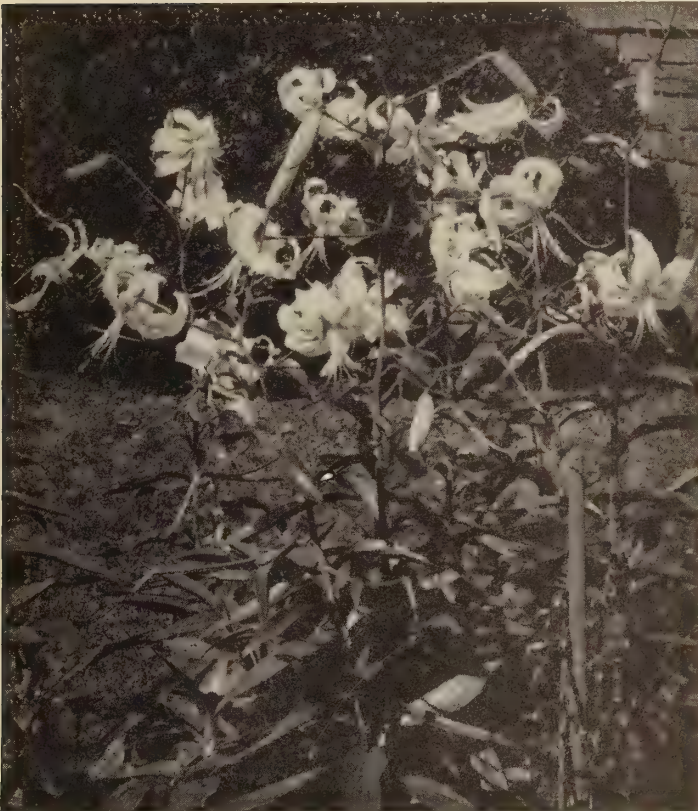
To see the plant growing impresses one with a feeling of vigor and well being. Must be planted deeply as it produces an unusually strong mass of stem-roots.

See color illustration, page 35.

It may be grown to perfection in a rich, open, woodland soil overlying a stiff, sandy loam, into which its long roots can wander as they please. On the richness of the top-soil depends the growth of the stem and flowers, and it is no exaggeration to say that one cannot mulch this lily too much. As it opens its flowers late in the season, August and September, it is probably best to plant Lilium Speciosum in full sunshine. Plant 10 to 12 inches deep, of course among ground shading shrubs, making sure as to the drainage.

"When my garden smiles and smells."

THE PURE WHITE STRAIN



SPECIOSUM ALBUM NOVUM. Flowers are large, of the purest white, with beautiful golden yellow anthers. Stem-roots, August-September flowering. Grows 2½ to 4 feet high.

Extra Heavy Selected Bulbs: \$1.35 each; \$3.90 for 3; \$12.50 for 10; \$30.00 for 25.

Extra Selected Bulbs: \$1.10 each; \$3.15 for 3; \$9.50 for 10; \$22.50 for 25.

THE PINK STRAINS

SPECIOSUM MAGNIFICUM. (Improved Rubrum) Rich ruby-carmine, margined white; stout of substance and broad of petal. Improved "Rubrum." This variety stands out prominently on account of its vigorous growth, 3½ to 5 feet high, as well as the size and depth of coloring of the blooms. Stem-roots, August-September flowering. *See color illustration, page 35.*

SPECIOSUM MELPOMENE. The delicate beauty of the lighter colored flowers makes this variety most desirable. Deep carmine-crimson, intensified by a narrow margin of white. Stem-roots, August-September flowering.

Prices

Extra Heavy Specimen Bulbs: 13 to 14 inches in circumference \$1.75 each; \$5.25 for 3; \$16.50 for 10; \$35.00 for 25.

Extra Selected Bulbs: 11 to 13 inches in circumference \$1.25 each; \$3.50 for 3; \$11.50 for 10; \$25.00 for 25.

Selected Bulbs: 10 to 11 inches in circumference \$1.00 each; \$2.85 for 3; \$9.00 for 10; \$19.00 for 25.

*Plan your Lily Garden
so that you will have
Lovely Fragrant Blossoms
All Summer Long —*

**July through September
LILY GARDEN COLLECTIONS**

See page 40

Tiger Lilies

HARDY — ROBUST — DEPENDABLE — BEAUTIFUL
GROW 4 TO 5 FEET HIGH — AUGUST FLOWERING.

The Rare Double Lily

TIGRINUM FLORE PLENO. The exquisite extra petals to this bloom creates a lovely effect. Double flowered Lilies are rare and this is one of the loveliest. Salmon-orange with the blooms spotted black. Fragrant and lovely in every way.

Extra Selected Bulbs: \$1.75 for 3; \$5.00 for 10; \$12.00 for 25; \$40.00 per 100.

The Lovely Single Form

TIGRINUM SPLENDENS. The large shapely flowers are of a rich, salmon-orange spotted with glossy black. Very robust in habit and very easy to grow. Makes stem roots so it must be planted 10 inches deep. Like the double form it naturalizes quickly and soon you will have colonies of the lovely Lilies to grace your garden.

Extra Selected Bulbs: \$1.75 for 3; \$5.00 for 10; \$12.00 for 25; \$40.00 per 100. See illustration, page 38.

Scheepers' Lily Garden Collections

Flowering Time from July through September

In response to repeated requests for a collection of Lilies that will produce blooms all summer long, we make the following suggestion: the varieties listed in the collections and described on pages 34 through 40 planted this spring will produce Exhibition Quality Plants and an abundance of blooms this summer. They are all hardy, strong growers that will produce blossoms in your garden season after season.

July Lily Garden

Consisting of 3 Finest Quality Bulbs each of the following varieties:

Centifolium	George C. Creelman
Fire King	Regale

Complete color range and all extra fine varieties. Planting and cultural instructions inclosed with each order.

TOTAL 12 FINEST QUALITY BULBS

Catalog Price \$13.75 SPECIAL PRICE \$12.00

August and September Lily Garden

Consisting of 3 Finest Quality Bulbs each of the following varieties:

Auratum Macranthum	Speciosum Album Novum
Henryi	Tigrinum Flore Pleno
Speciosum Magnificum	Tigrinum Splendens
Philippinense Formosanum	

Complete color range and all extra fine varieties. Planting and cultural instructions inclosed with each order.

TOTAL 21 FINEST QUALITY BULBS

Catalog Price \$19.40 SPECIAL PRICE \$18.00

Complete Lily Garden July, August and September Flowering

Consisting of 3 Finest Quality Bulbs each of the varieties contained in the July and August Lily Garden Collections.

11 different varieties 33 bulbs

Complete color range for a beautiful summer Lily Garden. Planting and cultural instructions contained with each order.

Catalog Price \$33.15 SPECIAL PRICE \$28.00

For special prices on Lily Garden Collections — 10, 25, 50 and 100 bulbs of a variety — please write for special quotation.

There are many other varieties of fine Lilies available. However, they may be planted in the Fall only. Our Fall Catalog which will be mailed to you in July will have a complete list of all Lilies.

From _____

Street _____

Town _____

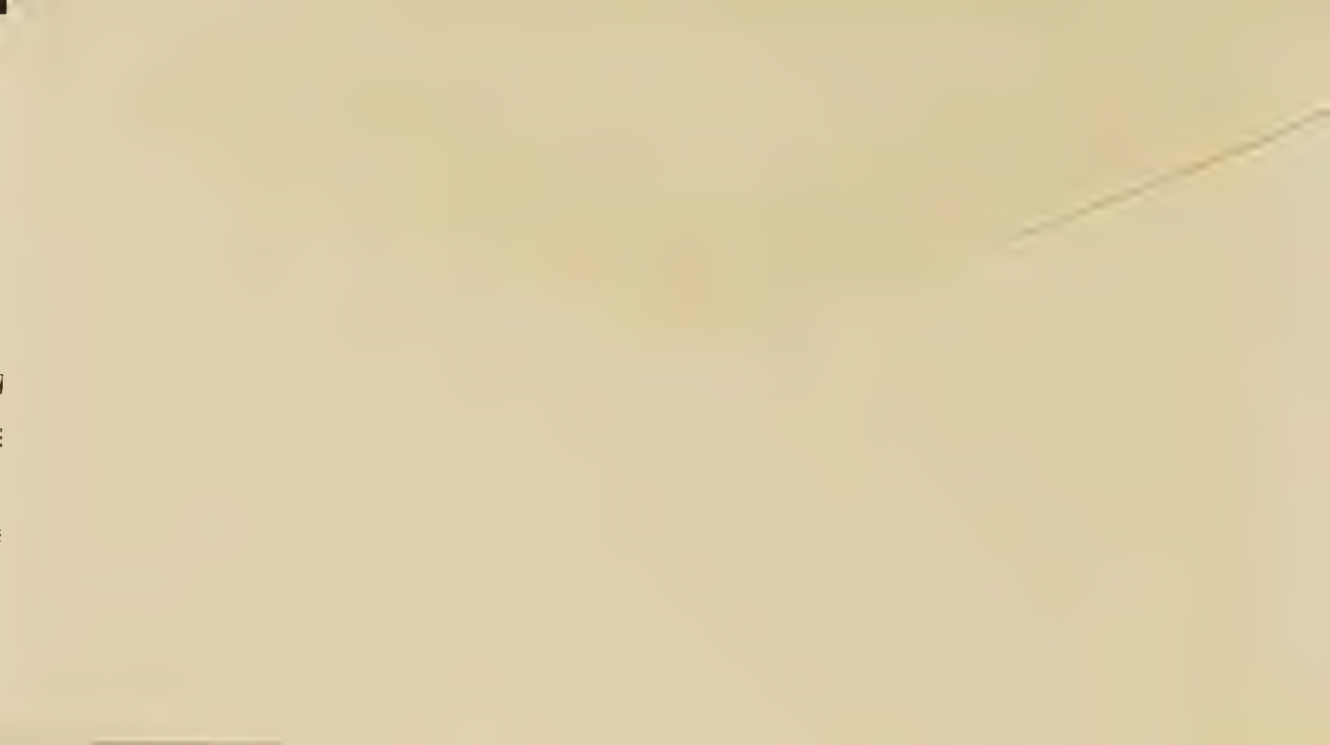
State _____

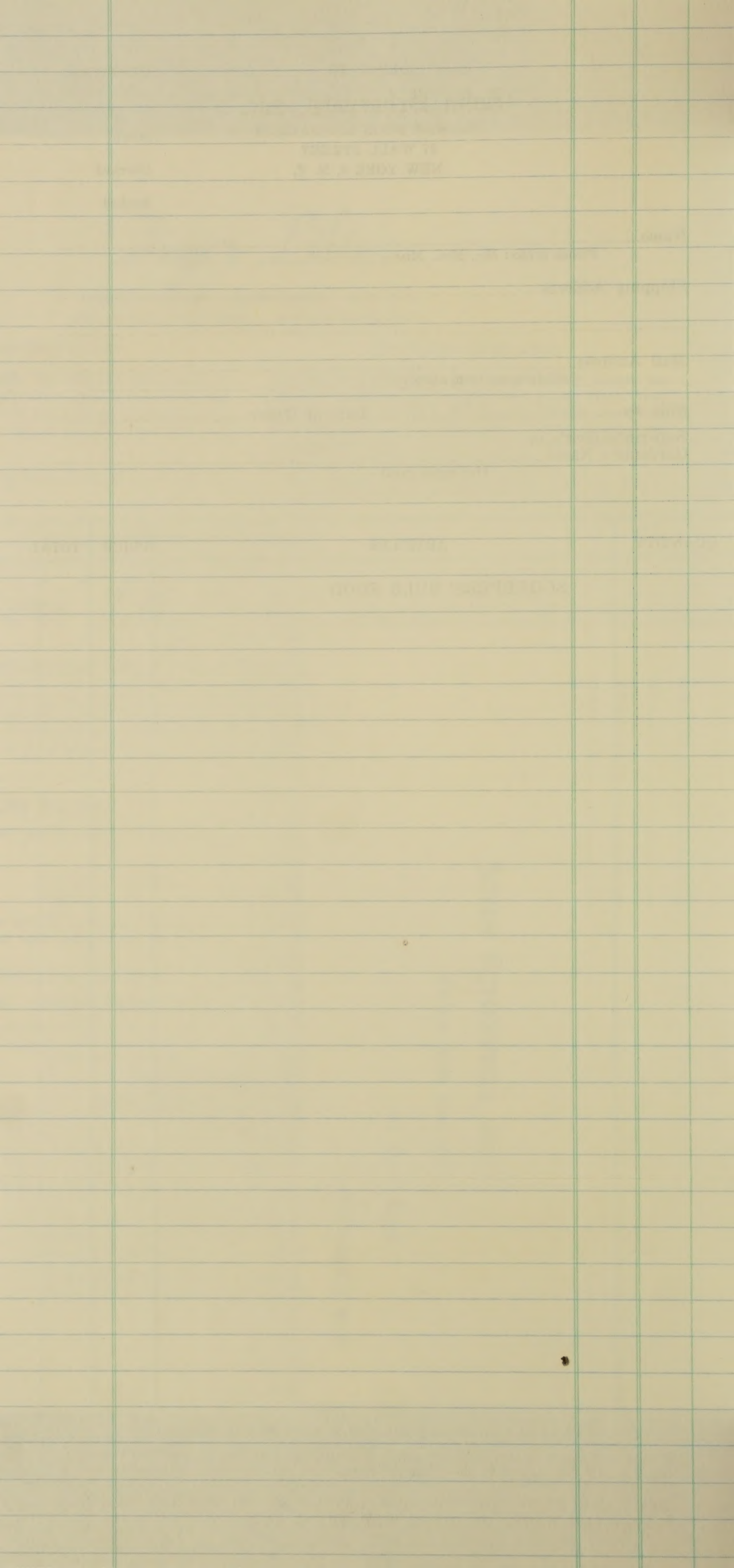
JOHN SCHEEPERS, INC.

Flower Bulb Specialists

37 Wall Street,

NEW YORK 5, N. Y.





Color Index of Gladioli

In making this color arrangement the principal shadings only were considered.

	See Page		See Page		See Page
WHITE					
Blizzard	3	Arc De Triomph	3	Atom (Miniature)	9
Florence Nightingale	4	Aureole	3	Fire Gleam	4
Morning Kiss	7	Hopman's Glory	4	ROSE	
Mother Fischer	7	Howard V. Wright (Novelty)	10	Burma	3
Snow Princess	7	Mother Kadel	7	Clarence D. Fortnam	3
Starlet (Miniature)	9	ORANGE			
White Gem	8	Circe	3	Gwen (Novelty)	10
White Lace	8	Flicker (Miniature)	9	Noweta Rose	7
BLOTCHED VARIETIES					
Apple Blossom (Novelty)	10	Johan Van Konynenburg	4	Washington	8
Bo-Peep (Miniature) Pink, Cream Blotch	9	October Sunshine	7	RED	
Carnival (Red, White Blotch)	3	Orange Butterfly (Miniature)	9	Johann Strauss	4
Crown Jewel (Novelty) Lavender, Red Blotch	10	GOLD			
Crusader (Novelty) White, Purple Blotch	10	Gold (Novelty)	10	Red Wing	7
Dolly Varden (Novelty) Salmon, Cream Blotch	10	Gold Dust	4	Royal Stewart (Novelty)	10
Gail Lavender, Rose Blotch	4	Little Gold (Miniature)	9	MAROON	
Heart O'Gold, White, Gold Blotch	4	LIGHT PINK			
Ladrone, Salmon, Yellow Blotch	4	Betty Co-Ed (Miniature)	9	Hawaii	4
Margaret Beaton, White, Cerise Blotch	7	Evangeline	4	LAVENDER	
Maytime, Pink, White Blotch	10	Friendship	4	Chivalry (Novelty)	10
Merry Widow, Purple, White Blotch	7	Loveliness (Miniature)	9	Elizabeth the Queen	4
Pactolus, Buff, Scarlet Blotch	7	Pink Radiance	7	The Orchid (Miniature)	9
Ravel, Blue, Reddish Blotch	7	Rosa Van Lima	7	LILAC	
Salman's Glory, Creamy White, Carmine Blotch Edged Yellow	7	PINK			
Spotlight, Yellow, Red Blotch	8	Dr. Fleming	4	LIGHT BLUE	
Wedgewood, Lavender, Cream Blotch	8	General Eisenhower	4	Blue Beauty	3
CREAMY WHITE					
Cream Orchids (Novelty)	10	Spic and Span	8	Caribbean (Novelty)	10
Leading Lady	4	Sweet Sixteen	7	Salman's Sensation (Novelty)	10
Lief Ericsson	4	SALMON-PINK			
APRICOT					
Patrol	7	Picardy	7	DARK BLUE	
DEEP SALMON					
Dieppe					
ODD SHADES OR "SMOKIES"					
Buckeye Bronze					

SPECIAL MIXTURES — See page 13

Color Index of Dahlias

	See Page		See Page		See Page
WHITE					
Janine Sawyer (Formal-Decorative)	27	APRICOT, BUFF AND BRONZE			
Little Snow White (Pompon)	33	Amber Queen (Pompon)	33	LAVENDER	
Madonna (Informal-Decorative)	27	Ogden Reid (Informal-Decorative)	28	Little Wisteria (Miniature)	32
Michigan White (Semi-Cactus)	28	ORANGE			
Purity (Single)	31	Andries Orange (Miniature)	32	PURPLE	
White Fawn (Miniature)	32	ROSE			
White Superior (Cactus)	28	World Event (Informal-Decorative)	28	YELLOW	
PINK					
Betty Anne (Pompon)	33	RED			
Clara Carder (Informal-Decorative)	26	Arthur Godfrey (Formal-Decorative)	26	Atomic Yellow (Semi-Cactus)	26
Fairy (Miniature)	32	Bishop of Landaff (Single)	31	Candlelight (Single)	31
Five Star General (Formal-Decorative)	27	Edith Mueller (Pompon)	33	Corinna (Miniature)	32
Jersey's Beauty (Formal-Decorative)	27	General Eisenhower (Incurved-Cactus)	27	Kirsten Flagstad (Informal-Decorative)	27
Lilly Belle (Miniature)	32	Ike (Miniature)	32	Yellow Gem (Pompon)	33
Newport Triumph (Single)	31	Little Fireball (Miniature)	32	Yellow Star (Cactus)	28
GOLDEN					
Golden Eclipse (Formal-Decorative)	27	Maffie (Semi-Cactus)	28	BI-COLOR	
Jane Cowl (Informal-Decorative)	27	Mrs. George LeBoutillier (Informal-Decorative)	28	Dixie Wine Dot (Informal-Decorative)	26
APRICOT, BUFF AND BRONZE					
Amber Queen (Pompon)					
Ogden Reid (Informal-Decorative)					
ORANGE					
Andries Orange (Miniature)					
ROSE					
World Event (Informal-Decorative)					
RED					
Arthur Godfrey (Formal-Decorative)					
Bishop of Landaff (Single)					
Edith Mueller (Pompon)					
General Eisenhower (Incurved-Cactus)					
Ike (Miniature)					
Little Fireball (Miniature)					
Maffie (Semi-Cactus)					
Mrs. George LeBoutillier (Informal-Decorative)					
Red Baby (Pompon)					
The Cardinal (Semi-Cactus)					
LAVENDER					
Little Wisteria (Miniature)					
PURPLE					
Mrs. Hester A. Pape (Informal-Decorative)					
Sherry (Pompon)					
YELLOW					
Atomic Yellow (Semi-Cactus)					
Candlelight (Single)					
Corinna (Miniature)					
Kirsten Flagstad (Informal-Decorative)					
Yellow Gem (Pompon)					
Yellow Star (Cactus)					
BI-COLOR					
Dixie Wine Dot (Informal-Decorative)					
Morning Mist (Pompon) (White and Lavender)					
Indian Chief (Pompon) (Red Tipped White)					
Jane Lausche (Semi-Cactus) (Purple Tipped White)					
Joke (Miniature) (Red Tipped White)					
Lakeside Beauty (Formal-Decorative)					

